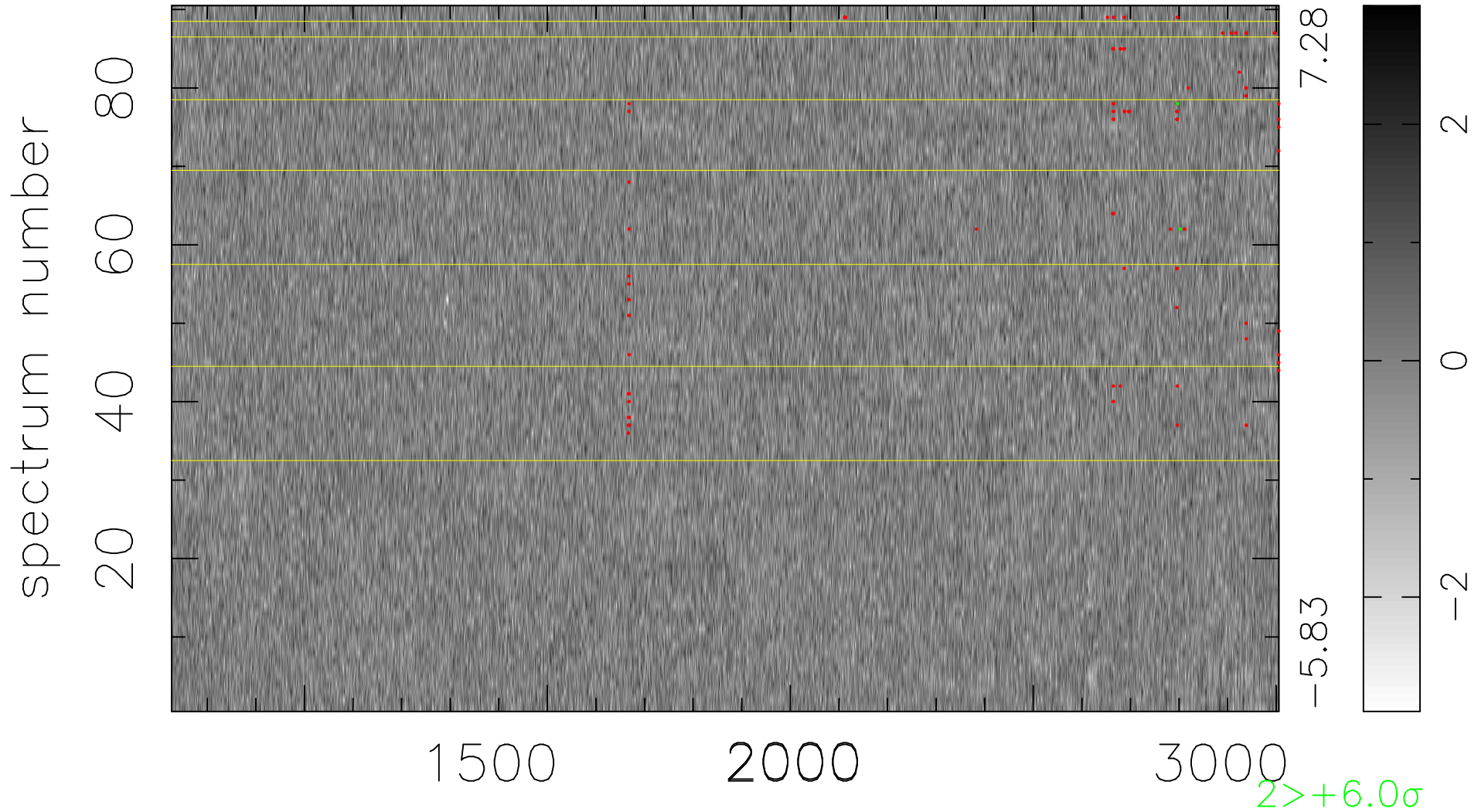


$$\chi(\lambda, t) = (\text{Data} - \text{Model AC}_5\text{B}_7\text{F}) / \sigma \chi$$

$$\chi^2 / (410220 - 5427) = 0.885 \Rightarrow 1.008$$

4558x90



bad:105=0.026% λ (Å) $z = 2.25789$

2 > +6.0σ