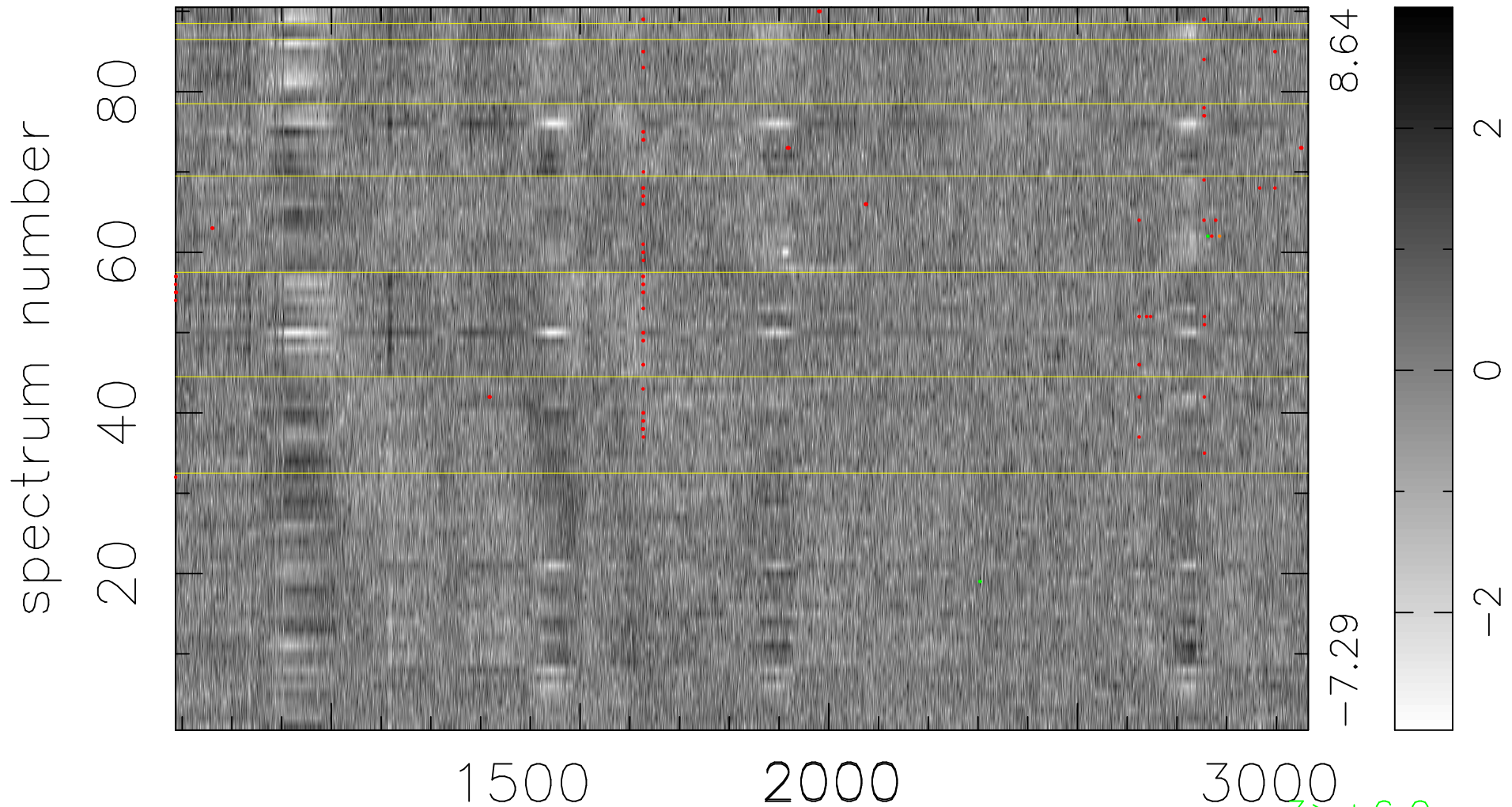


$$\chi(\lambda, t) = ( \text{Data} - \text{Model AC}_5\text{F} ) / \sigma \chi$$

$$\chi^2 / (409950 - 5317) = 1.092 \Rightarrow 1.008$$

4555x90



bad:115=0.028%  $\lambda$  (Å)  $z = 2.31986$

3 > +6.0σ  
1 < -6.0σ