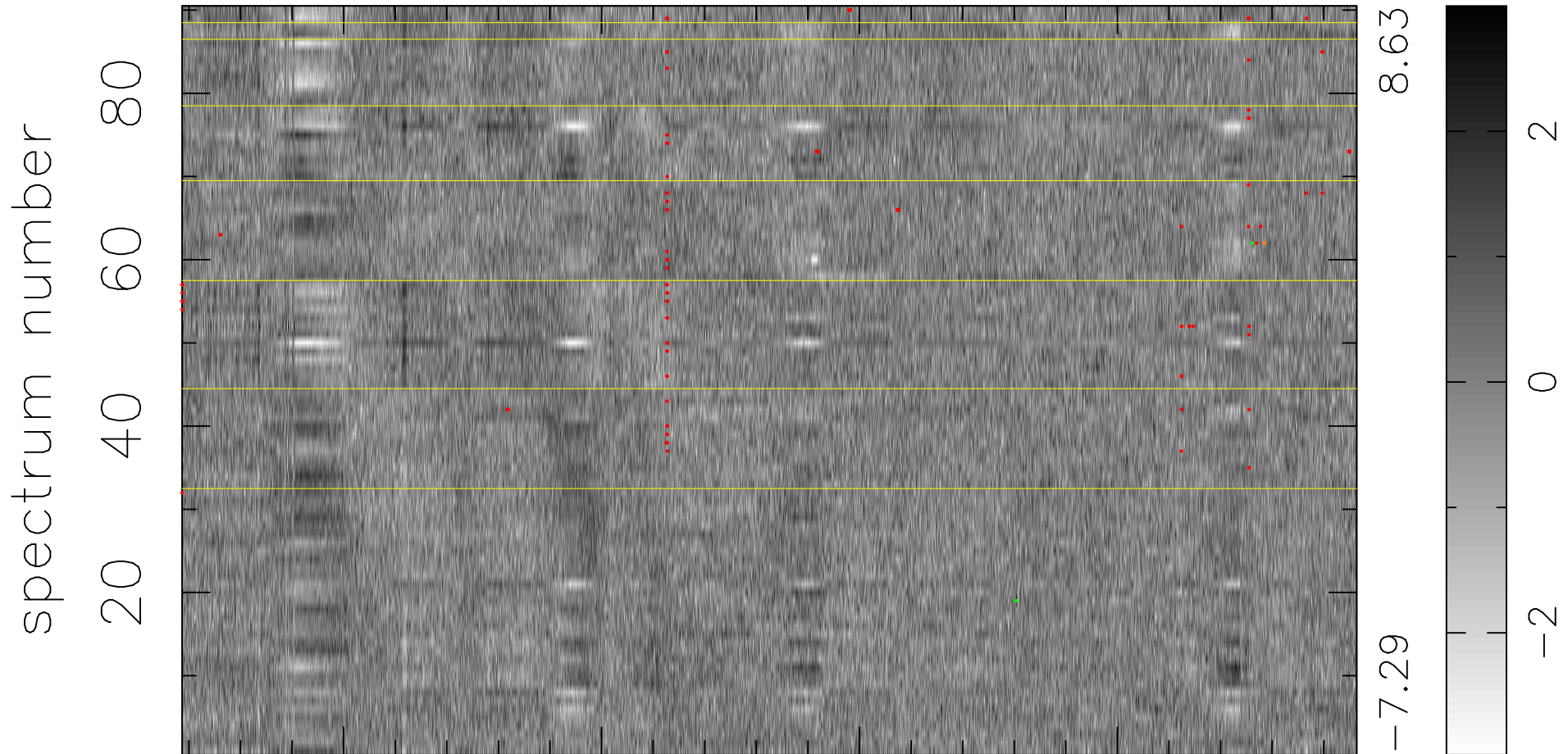


$$\chi(\lambda,t) = ( \text{Data} - \text{Model } AC_5 ) / \sigma \chi$$

$$\chi^2 / (409950 - 5227) = 1.093 \Rightarrow 1.008$$

4555x90



bad:115=0.028%  $\lambda$  (Å)  $z = 2.31986$

3 > +6.0σ

1 < -6.0σ