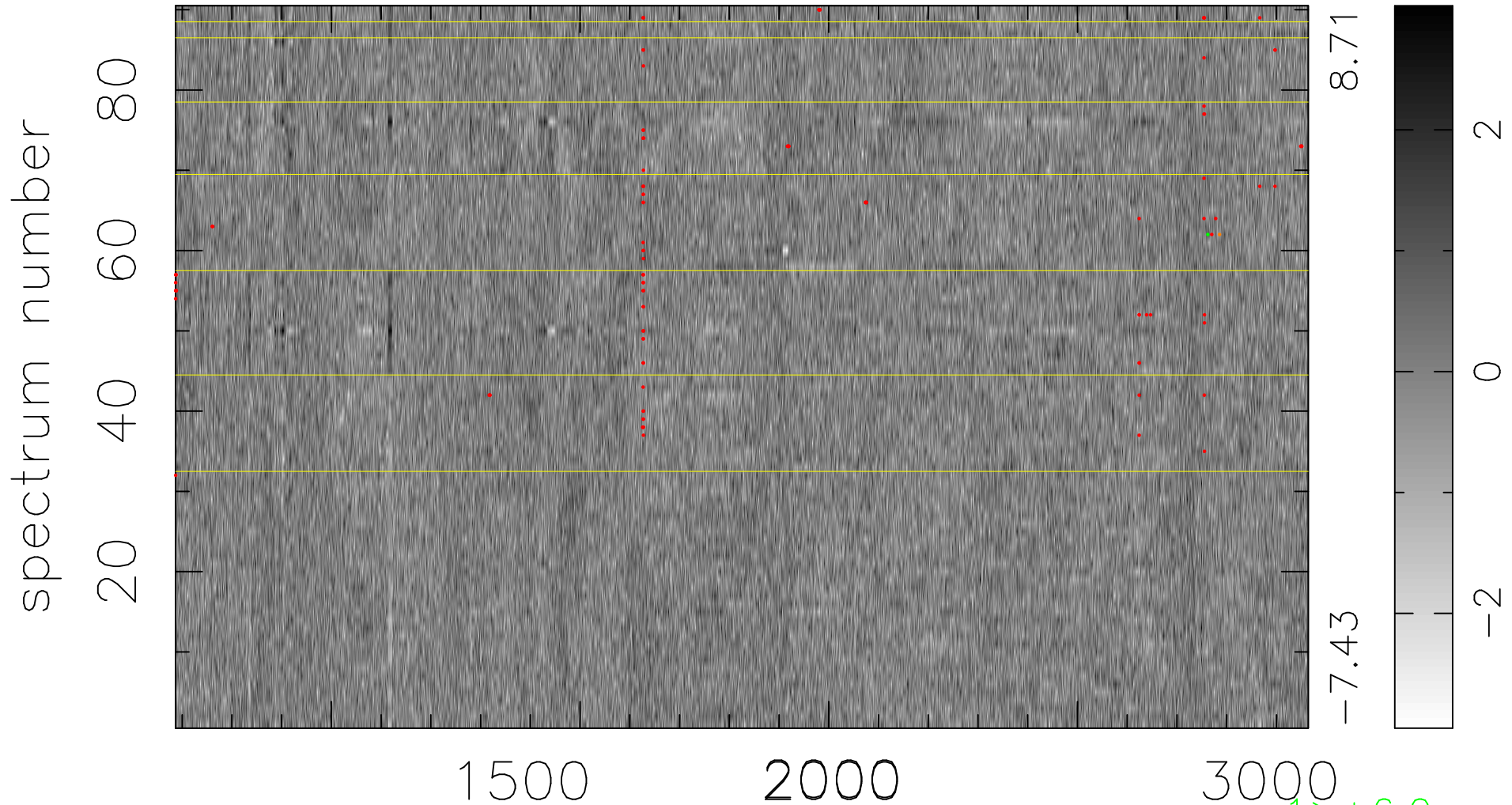


$$\chi(\lambda, t) = (\text{Data} - \text{Model } \text{AC}_5\text{B}_7\text{F}) / \sigma \chi$$

$$\chi^2 / (409950 - 5473) = 0.899 \Rightarrow 1.010$$

4555x90



bad:115=0.028% λ (Å) $z = 2.31986$

$1 > +6.0\sigma$
 $1 < -6.0\sigma$