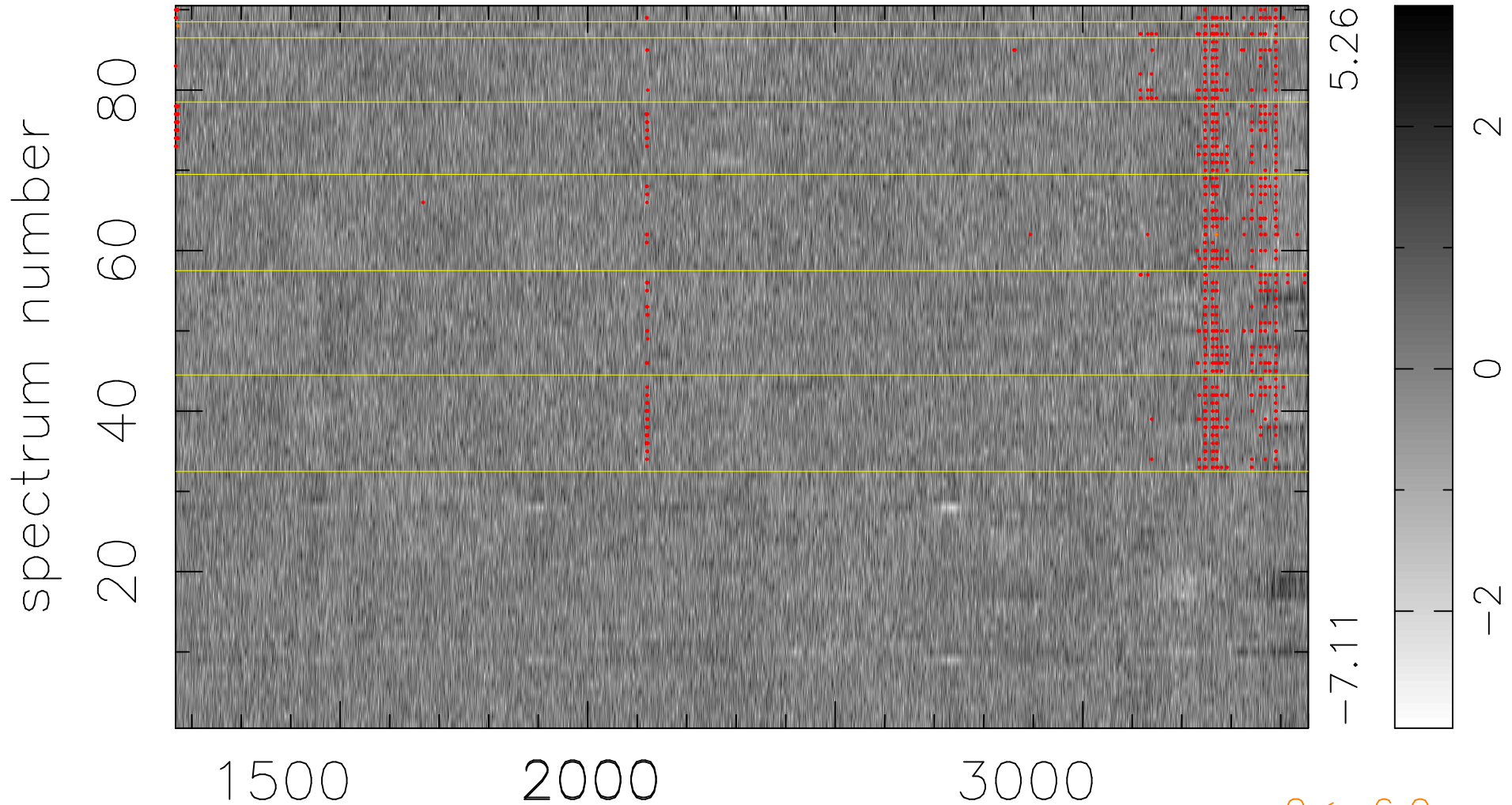


$$\chi(\lambda,t) = ( \text{Data} - \text{Model } AC_5 ) / \sigma \chi$$

$$\chi^2 / (411930 - 5056) = 1.025 \Rightarrow 1.007$$

4577x90



bad:868=0.21%

$\lambda$  (Å)  $z = 1.64543$

$2 < -6.0\sigma$