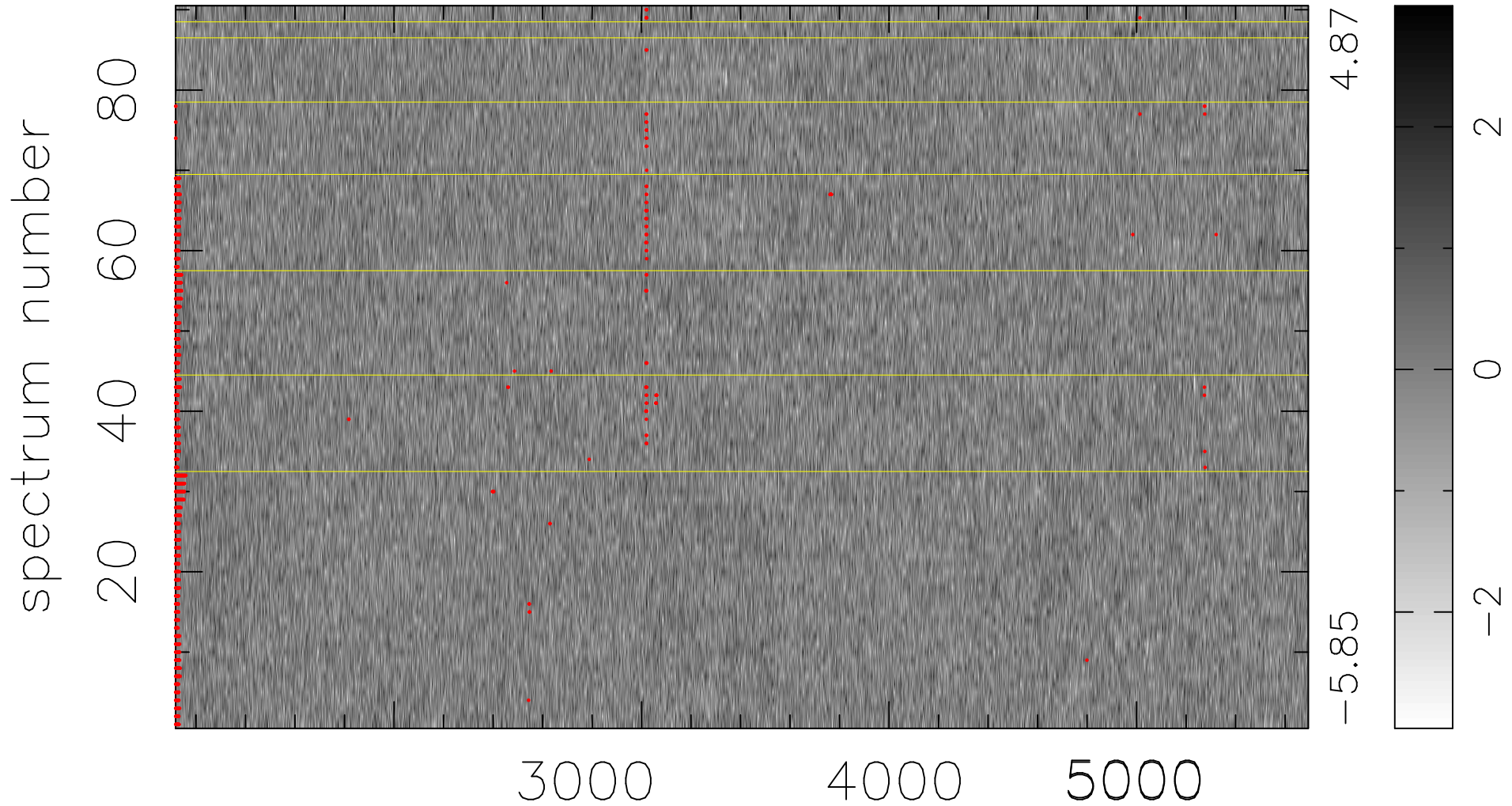


$$\chi(\lambda, t) = ( \text{Data} - \text{Model } \text{AC}_5\text{B}_3\text{F} ) / \sigma \chi$$

$$\chi^2 / (411930 - 5142) = 0.936 \Rightarrow 1.007$$

4577x90



bad:1287=0.31%  $\lambda$  (Å)  $z = 0.75607$