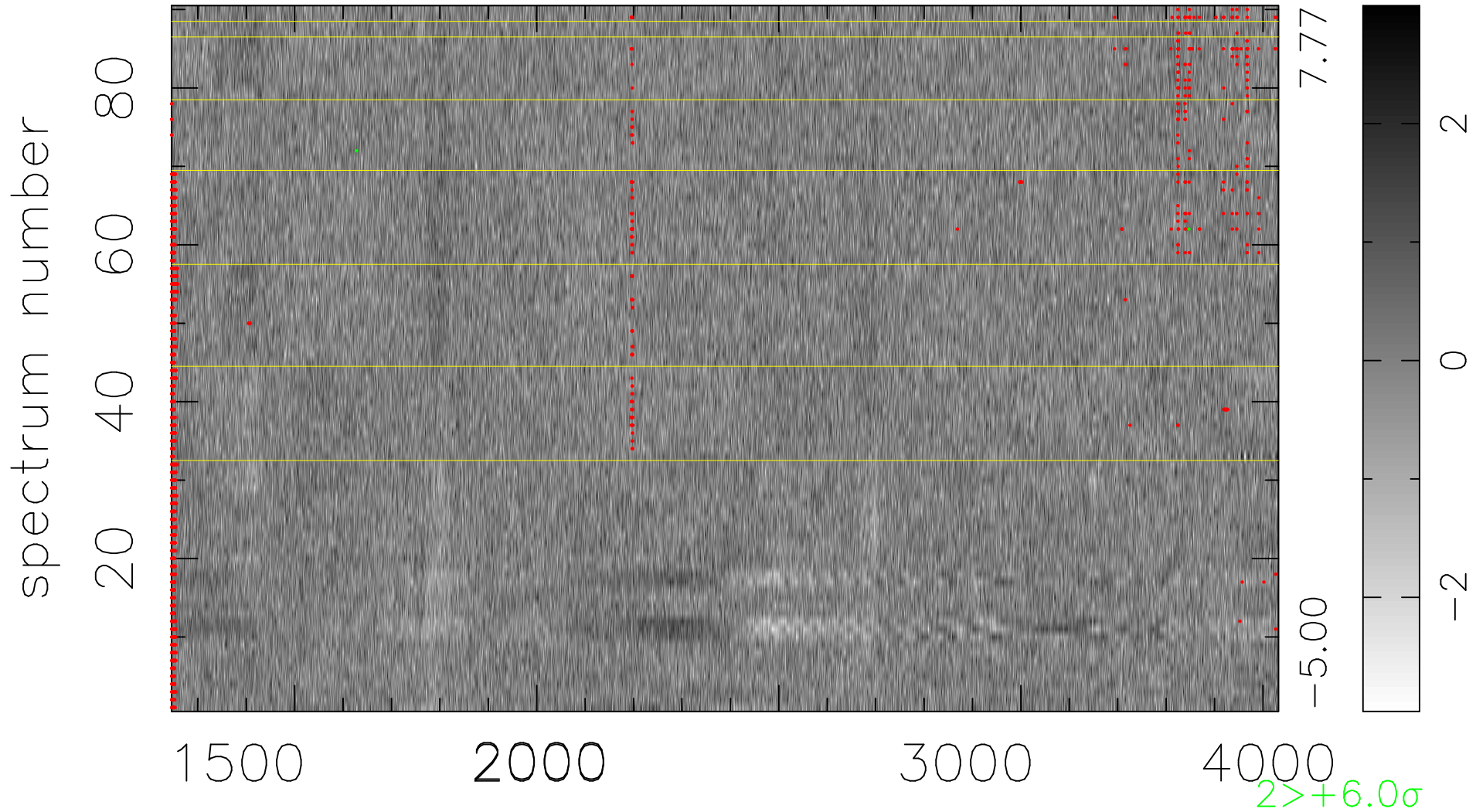


$$\chi(\lambda, t) = (\text{Data} - \text{Model } \text{AC}_5\text{B}_4\text{F}) / \sigma \chi$$

$$\chi^2 / (411570 - 5220) = 0.961 \Rightarrow 1.007$$

4573x90



bad:1435=0.35% λ (Å) $z = 1.55341$