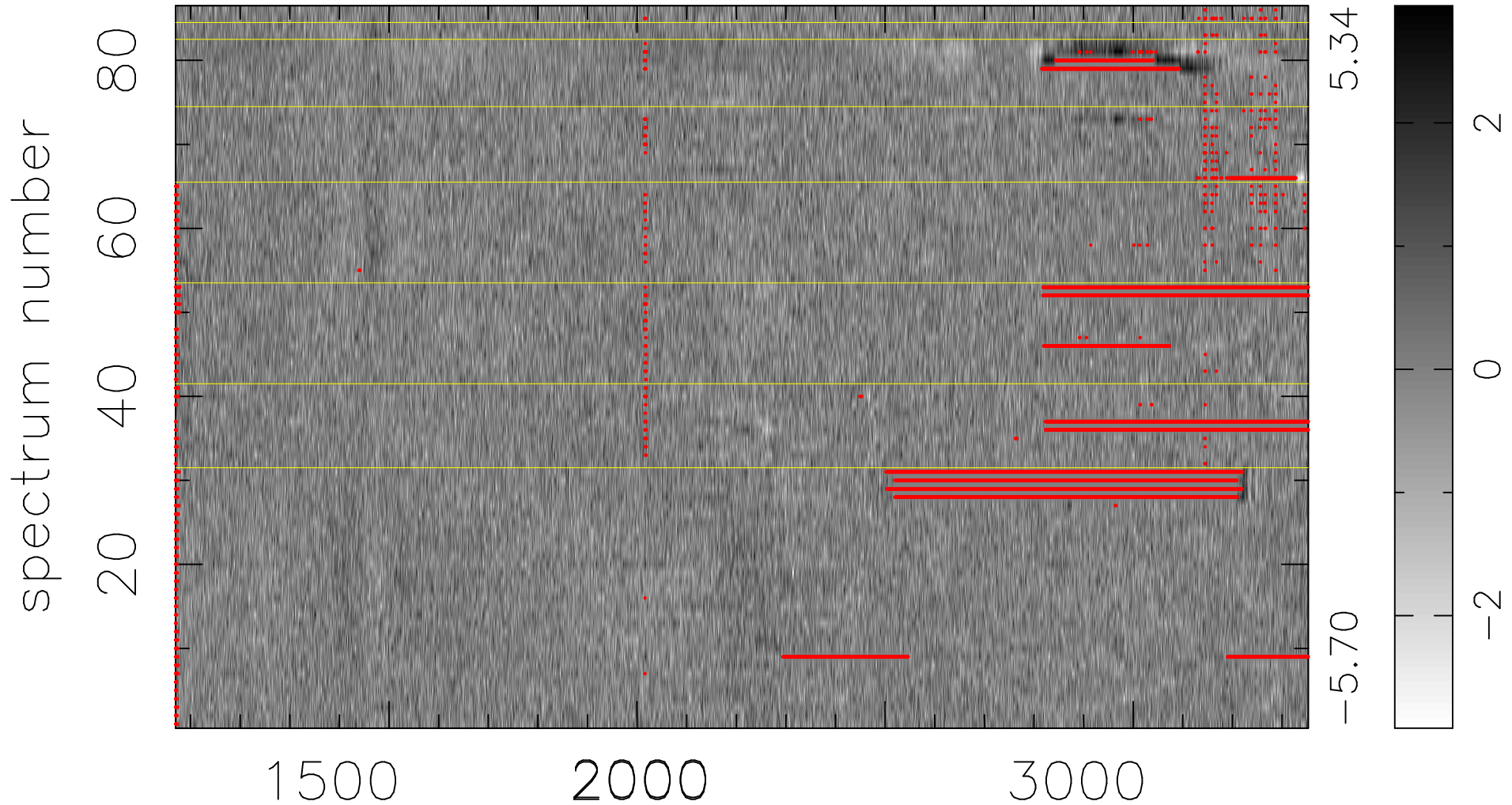


$$\chi(\lambda, t) = (\text{Data} - \text{Model } \text{AC}_5\text{B}_5\text{F}) / \sigma \chi$$

$$\chi^2 / (392762 - 5267) = 1.006 \Rightarrow 1.008$$

4567 × 86



bad:13416=3.4% λ (Å) $z = 1.77420$