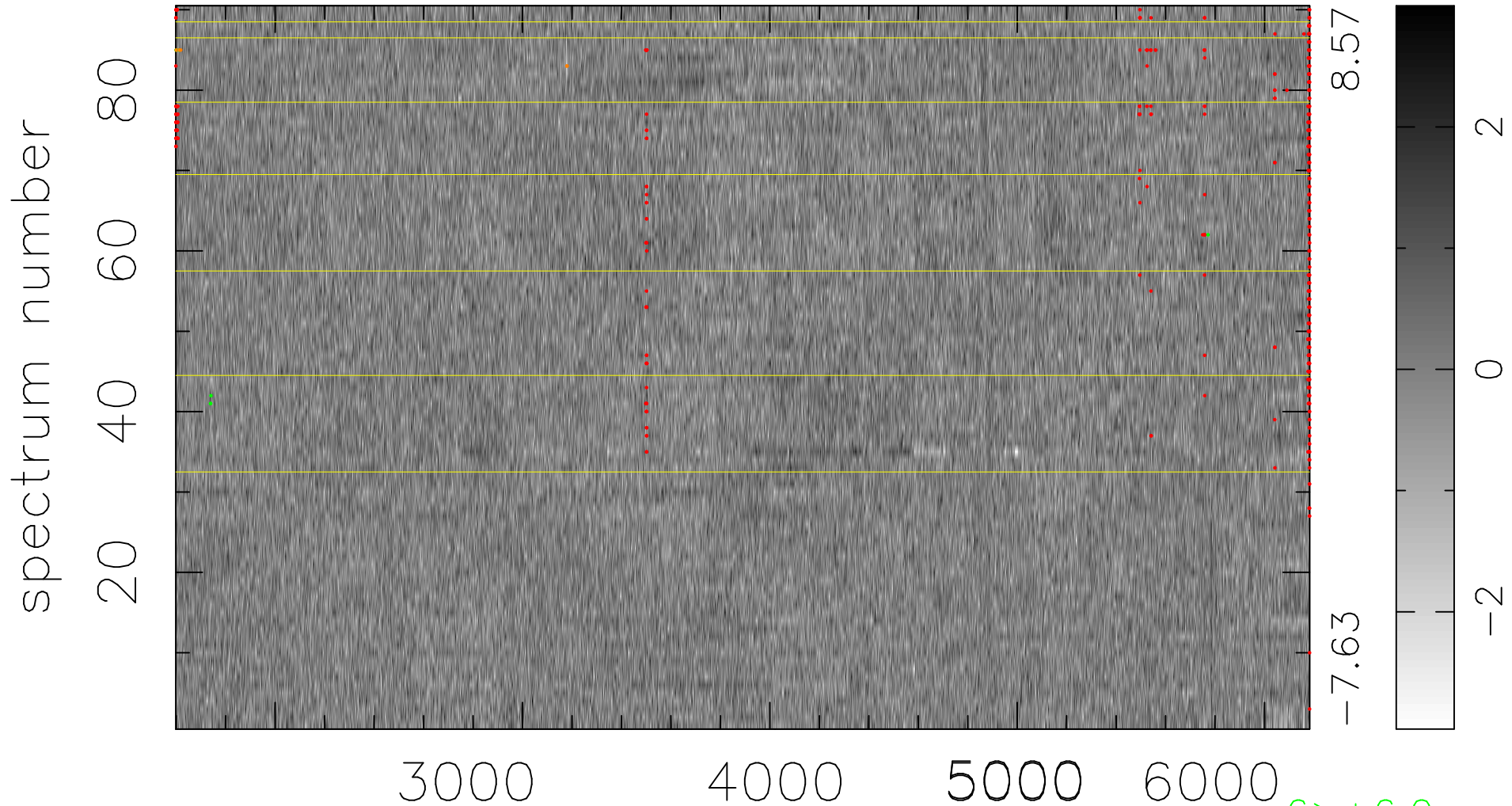


$$\chi(\lambda, t) = ( \text{Data} - \text{Model } \text{AC}_5\text{B}_4\text{F} ) / \sigma \chi$$

$$\chi^2 / (412650 - 5205) = 0.898 \Rightarrow 1.007$$

4585x90



bad:444=0.11%

$\lambda$  (Å)  $z = 0.57174$

6 > +6.0σ

6 < -6.0σ