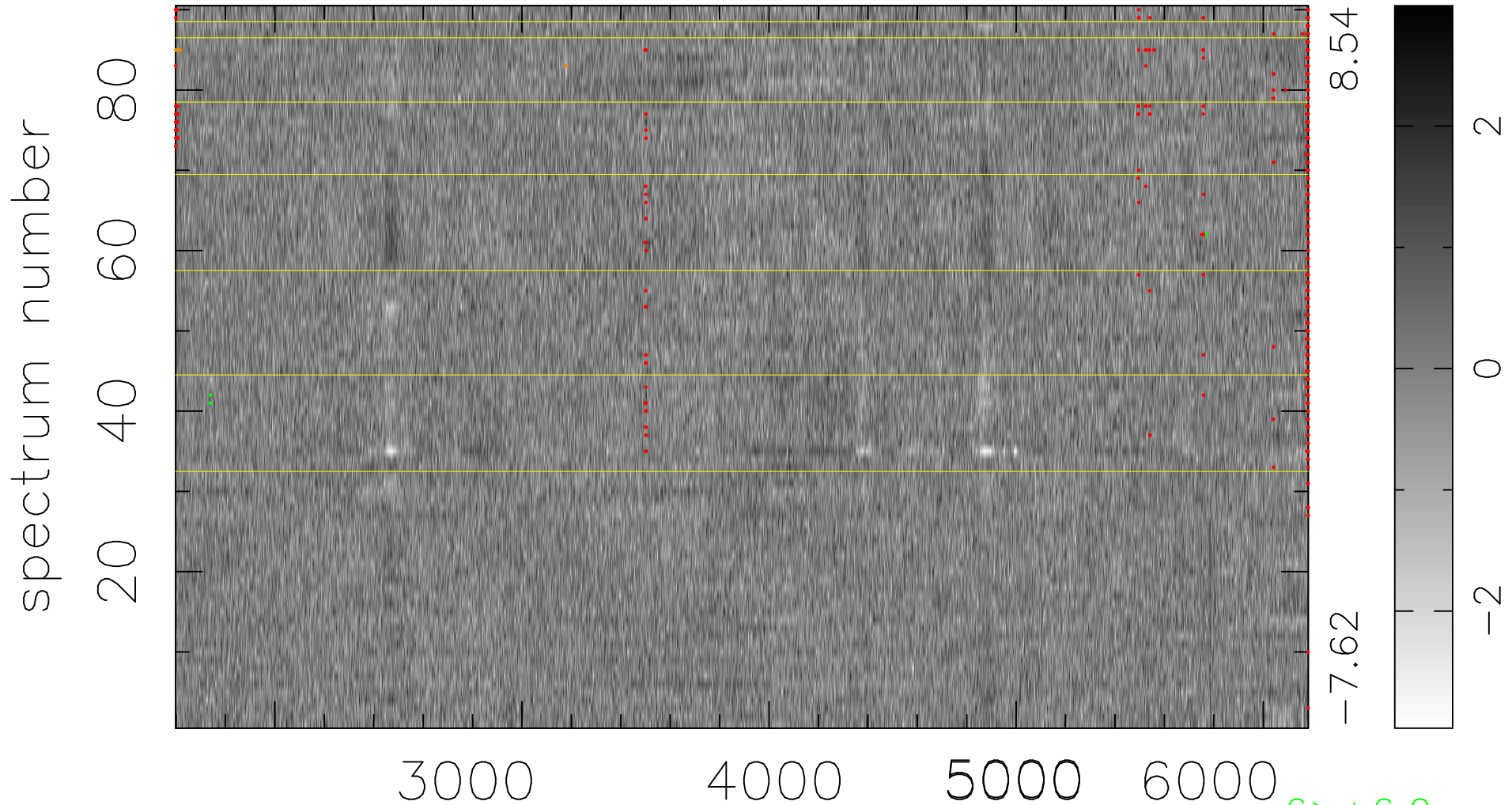


$$\chi(\lambda, t) = (\text{Data} - \text{Model AC}_5\text{F}) / \sigma \chi$$

$$\chi^2 / (412650 - 5054) = 0.907 \Rightarrow 1.006$$

4585x90



bad:444=0.11%

λ (Å) $z = 0.57174$

6 > +6.0σ

6 < -6.0σ