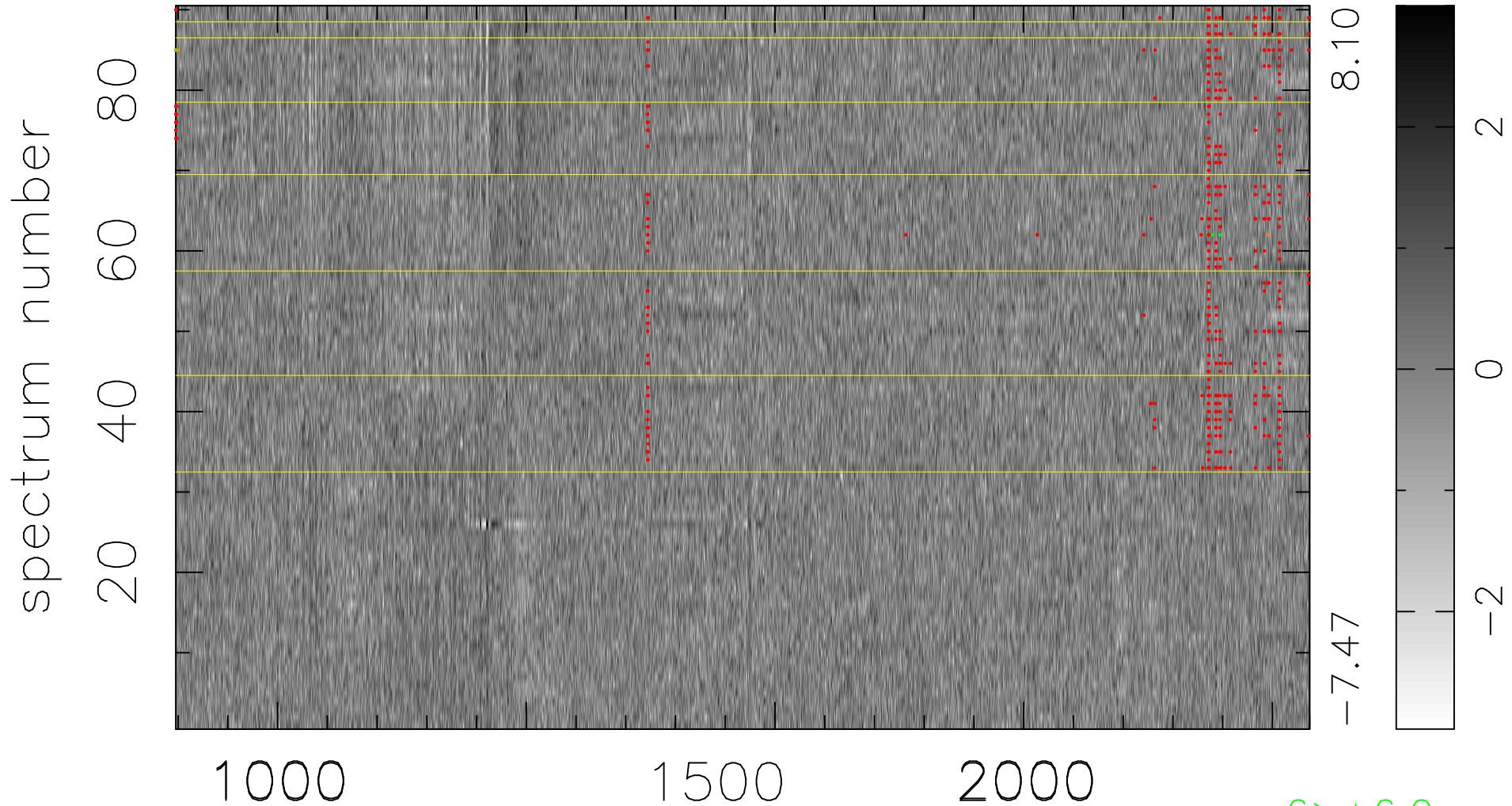


$$\chi(\lambda, t) = (\text{Data} - \text{Model } \text{AC}_5\text{B}_6\text{F}) / \sigma \chi$$

$$\chi^2 / (410400 - 5387) = 0.950 \Rightarrow 1.008$$

4560x90



bad:494=0.12%

λ (Å) $z = 2.95936$

6 > +6.0 σ

5 < -6.0 σ