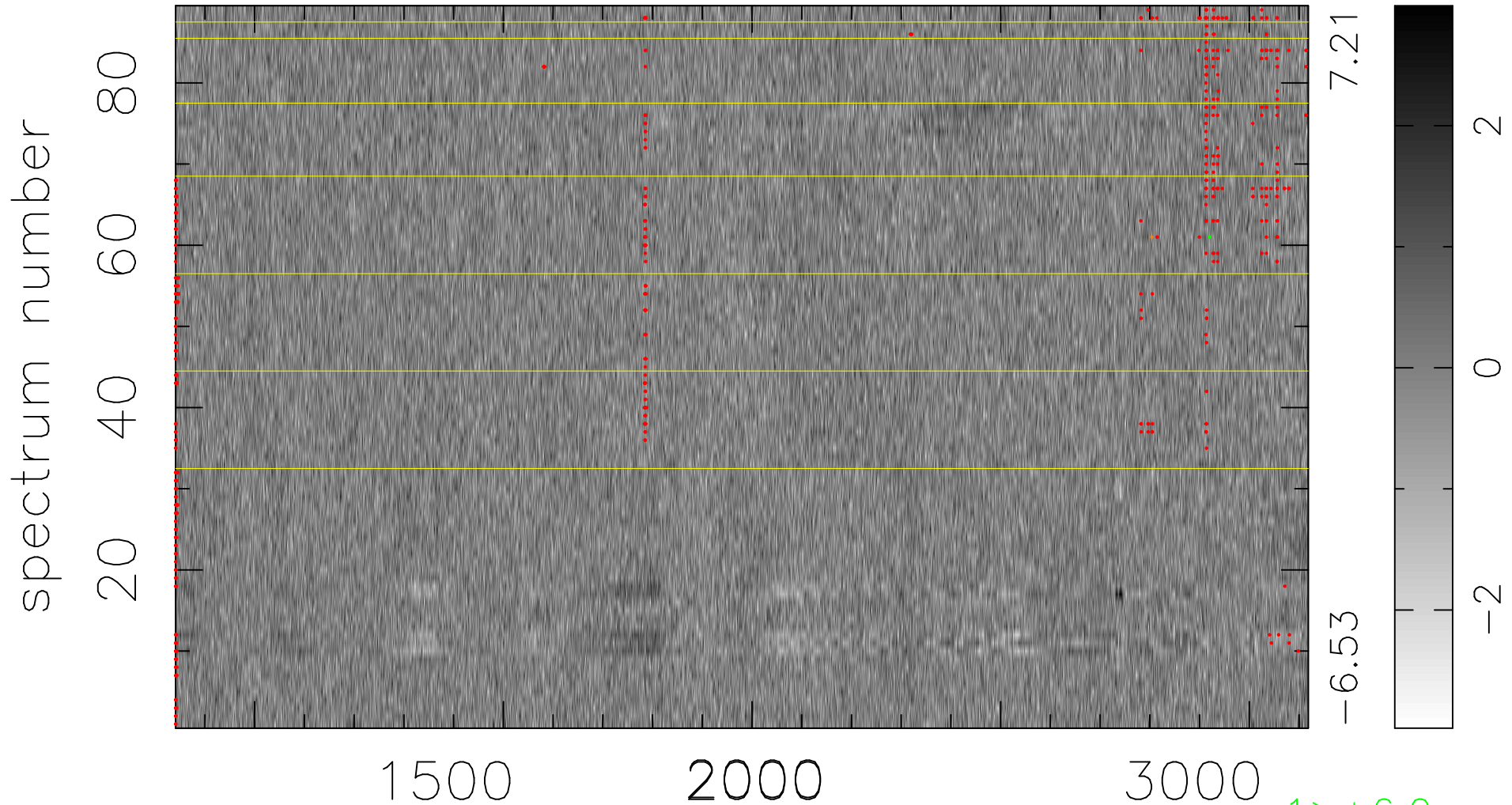


$$\chi(\lambda, t) = (\text{Data} - \text{Model } \text{AC}_5\text{B}_7\text{F}) / \sigma \chi$$

$$\chi^2 / (405484 - 5402) = 0.940 \Rightarrow 1.008$$

4556x89



bad:549=0.14%

λ (Å) $z = 2.08600$

1 > +6.0 σ

1 < -6.0 σ