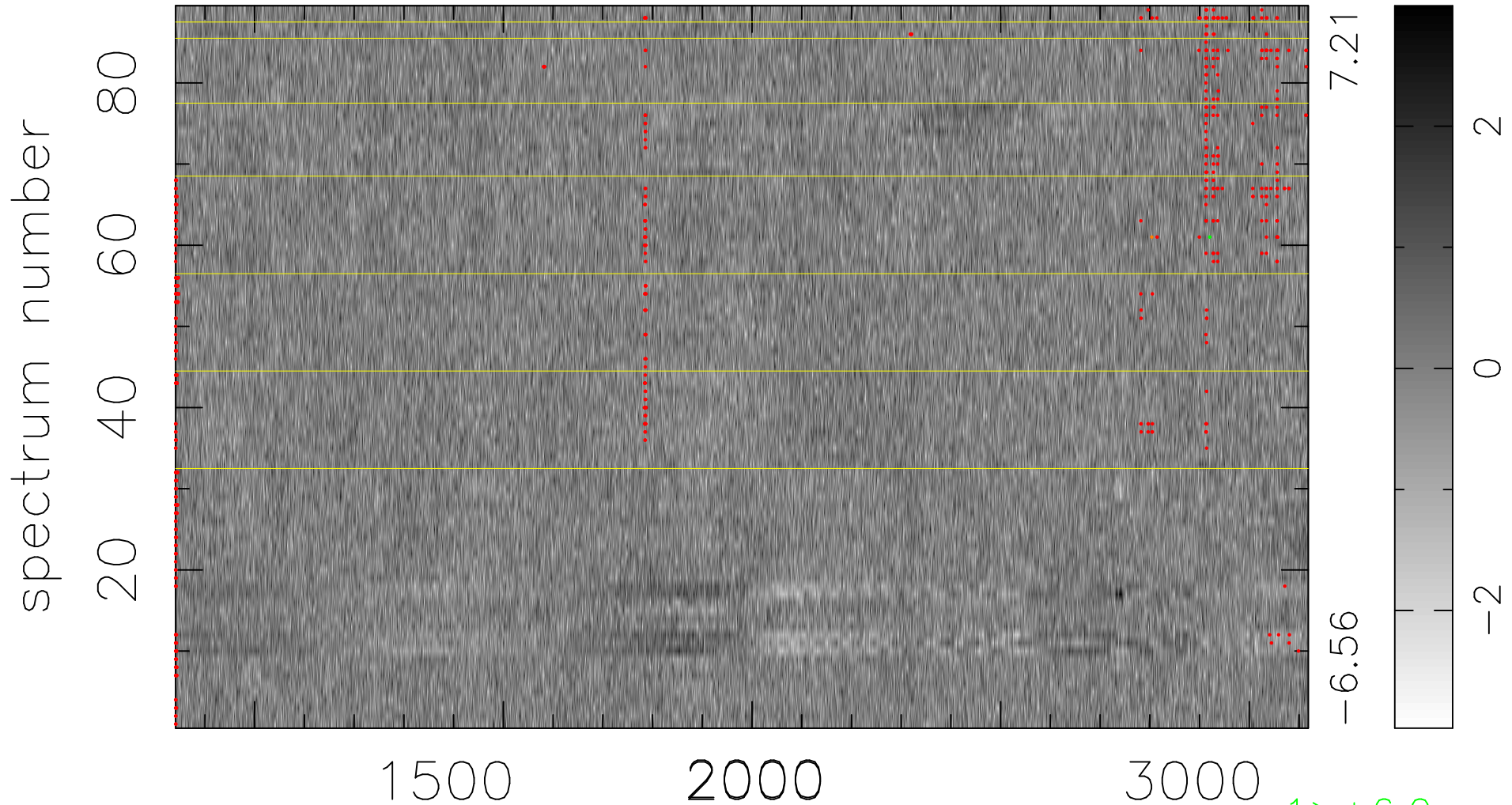


$$\chi(\lambda, t) = ( \text{Data} - \text{Model AC}_5\text{F} ) / \sigma \chi$$

$$\chi^2 / (405484 - 5298) = 0.950 \Rightarrow 1.008$$

4556 × 89



bad:549=0.14%

$\lambda$  (Å)  $z = 2.08600$

1 > +6.0σ

1 < -6.0σ