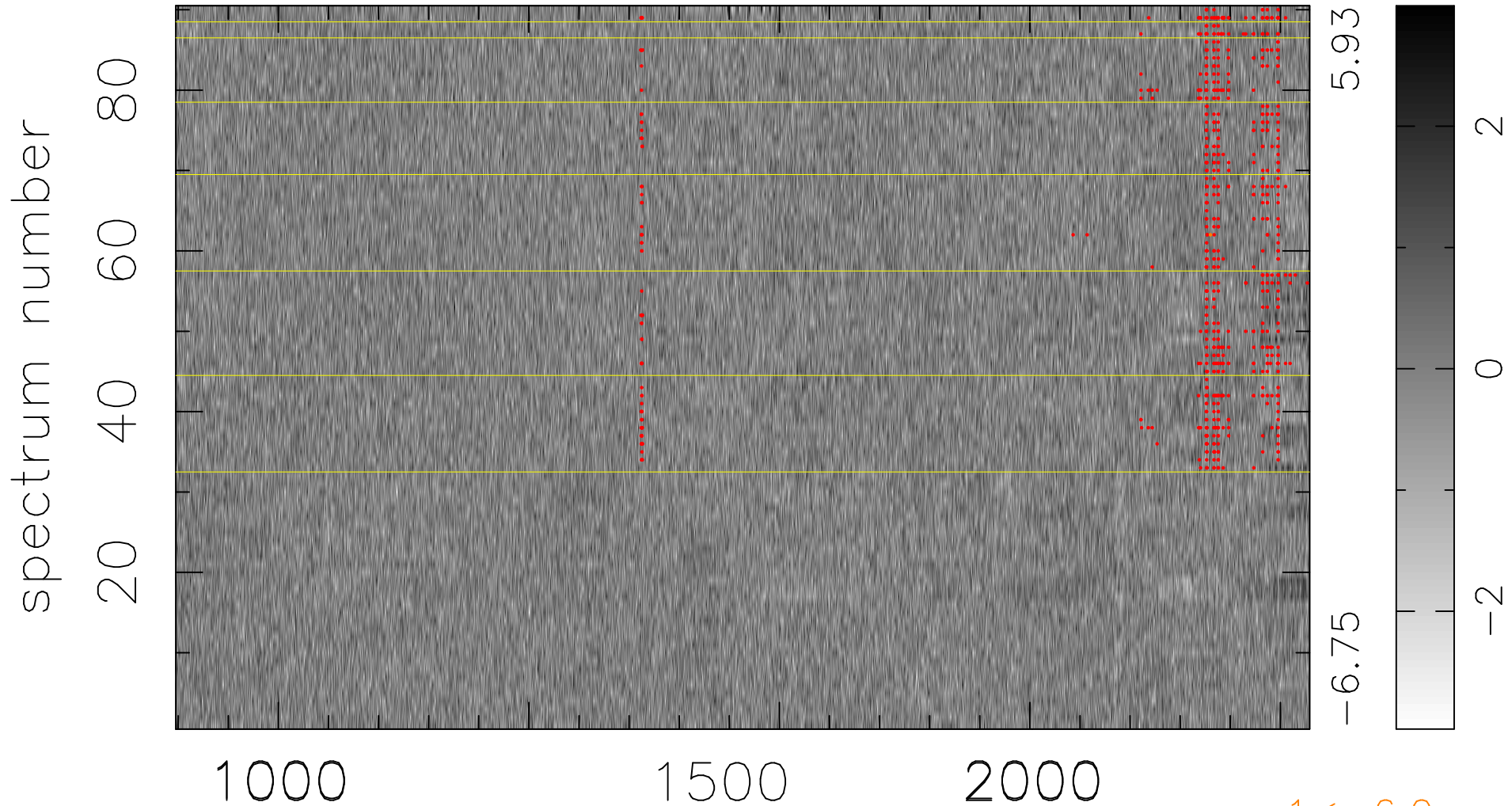


$$\chi(\lambda, t) = (\text{Data} - \text{Model } \text{AC}_5\text{B}_6\text{F}) / \sigma \chi$$

$$\chi^2 / (407430 - 5324) = 1.036 \Rightarrow 1.007$$

4527 × 90



bad:677=0.17%

λ (Å) $z = 2.99425$