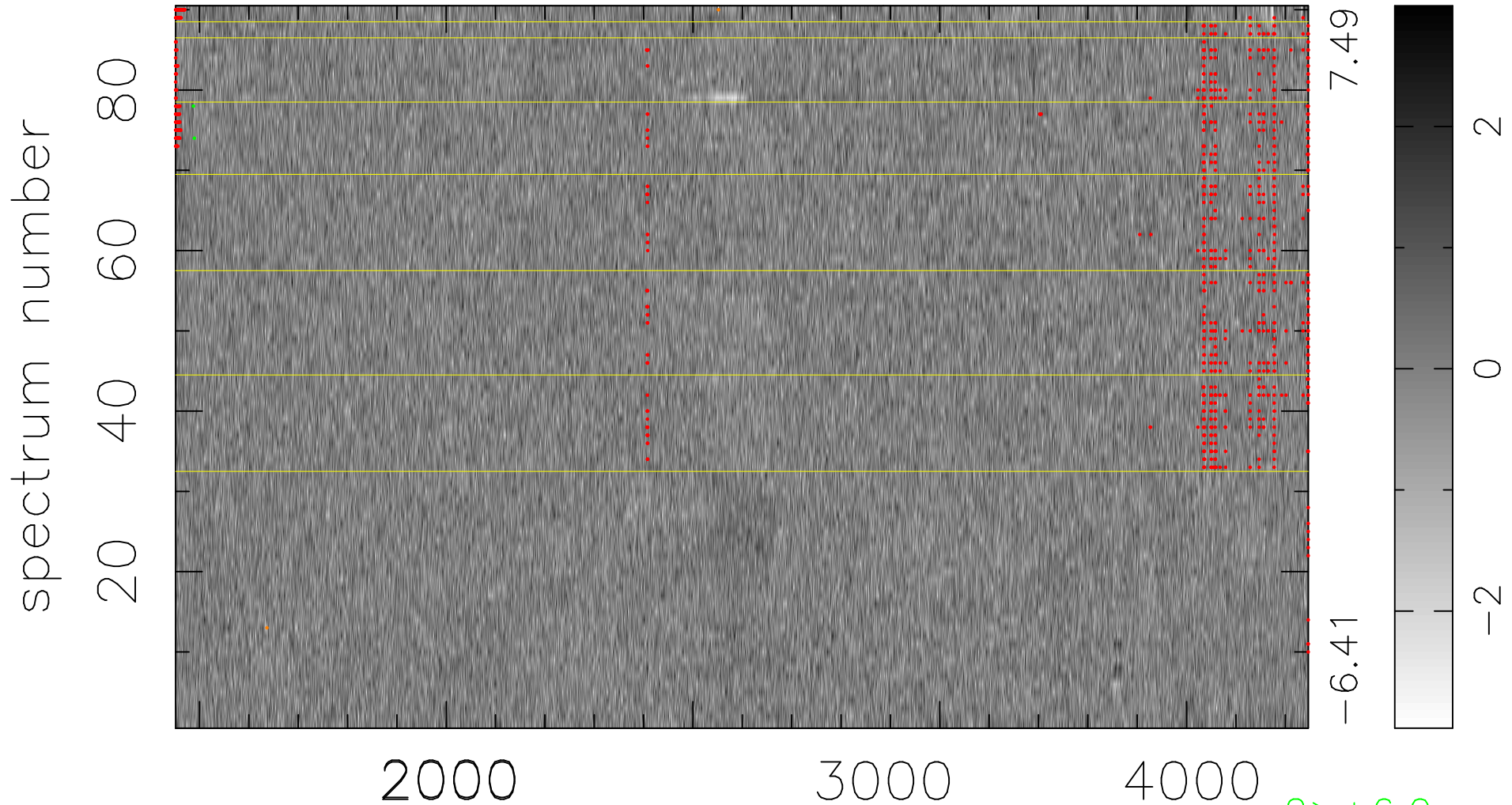


$$\chi(\lambda, t) = (\text{Data} - \text{Model } \text{AC}_5\text{B}_3\text{F}) / \sigma \chi$$

$$\chi^2 / (413190 - 5125) = 0.897 \Rightarrow 1.007$$

4591 × 90



bad:872=0.21%

λ (Å) $z = 1.31721$

2 > +6.0σ

2 < -6.0σ