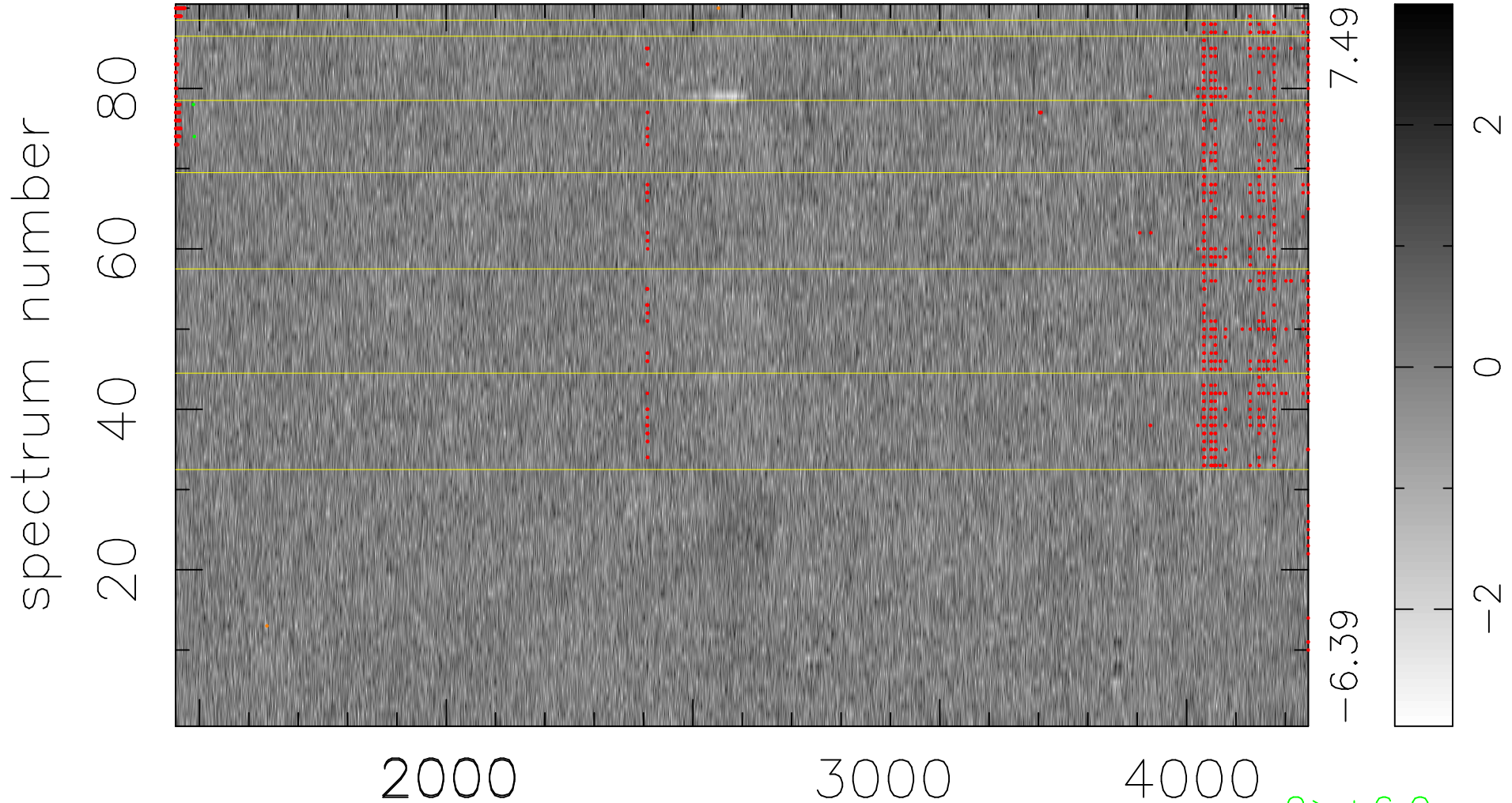


$$\chi(\lambda, t) = (\text{Data} - \text{Model AC}_5\text{F}) / \sigma \chi$$

$$\chi^2 / (413190 - 4971) = 0.899 \Rightarrow 1.007$$

4591 × 90



7.49

-6.39

2

0

-2

2 > +6.0σ

2 < -6.0σ

bad:872=0.21%

λ (Å) z = 1.31721