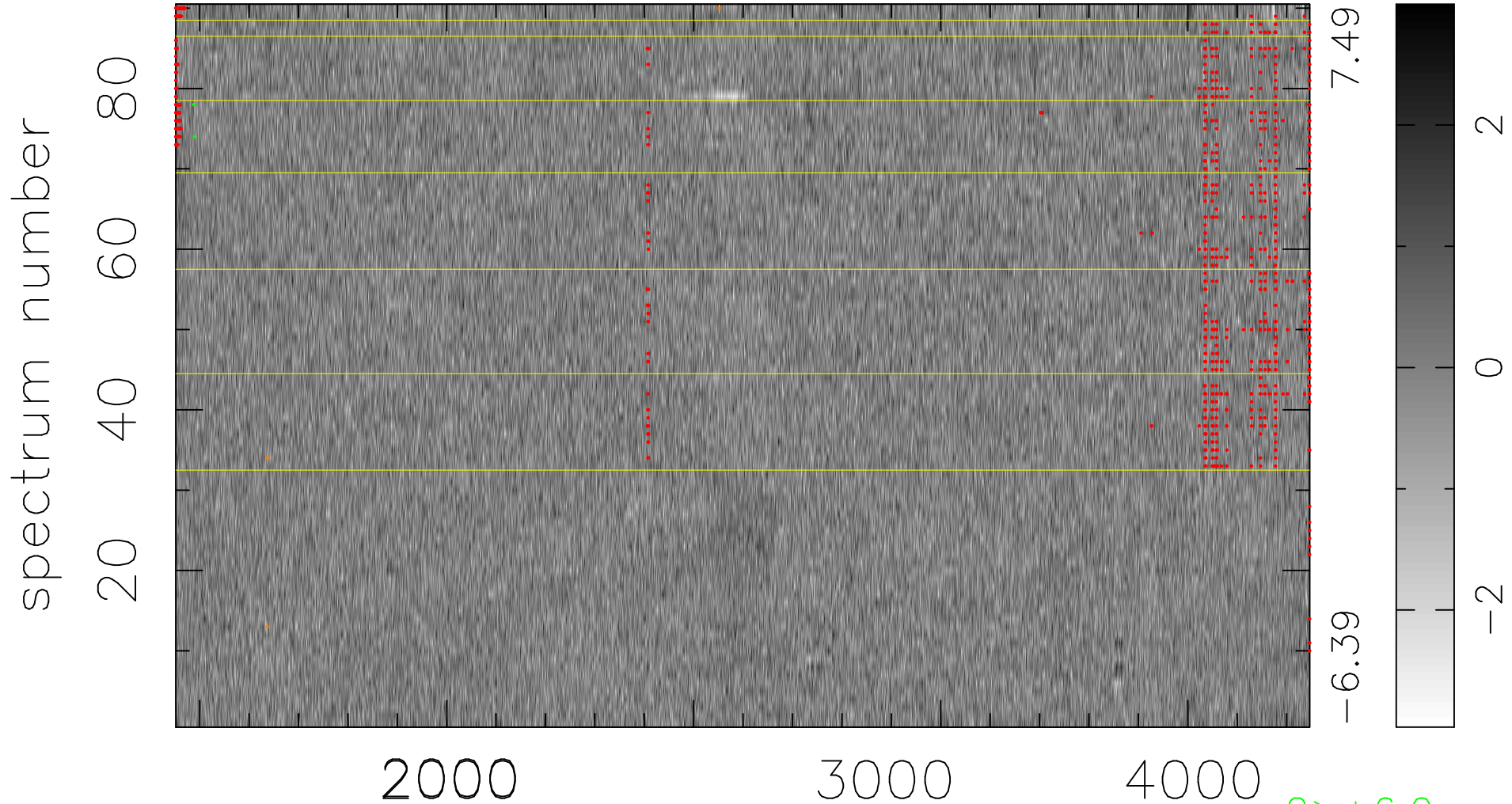


$$\chi(\lambda,t) = (\text{Data} - \text{Model } AC_5) / \sigma \chi$$

$$\chi^2 / (413190 - 4881) = 0.899 \Rightarrow 1.007$$

4591 × 90



bad:872=0.21%

λ (Å) $z = 1.31721$

2 > +6.0σ

3 < -6.0σ