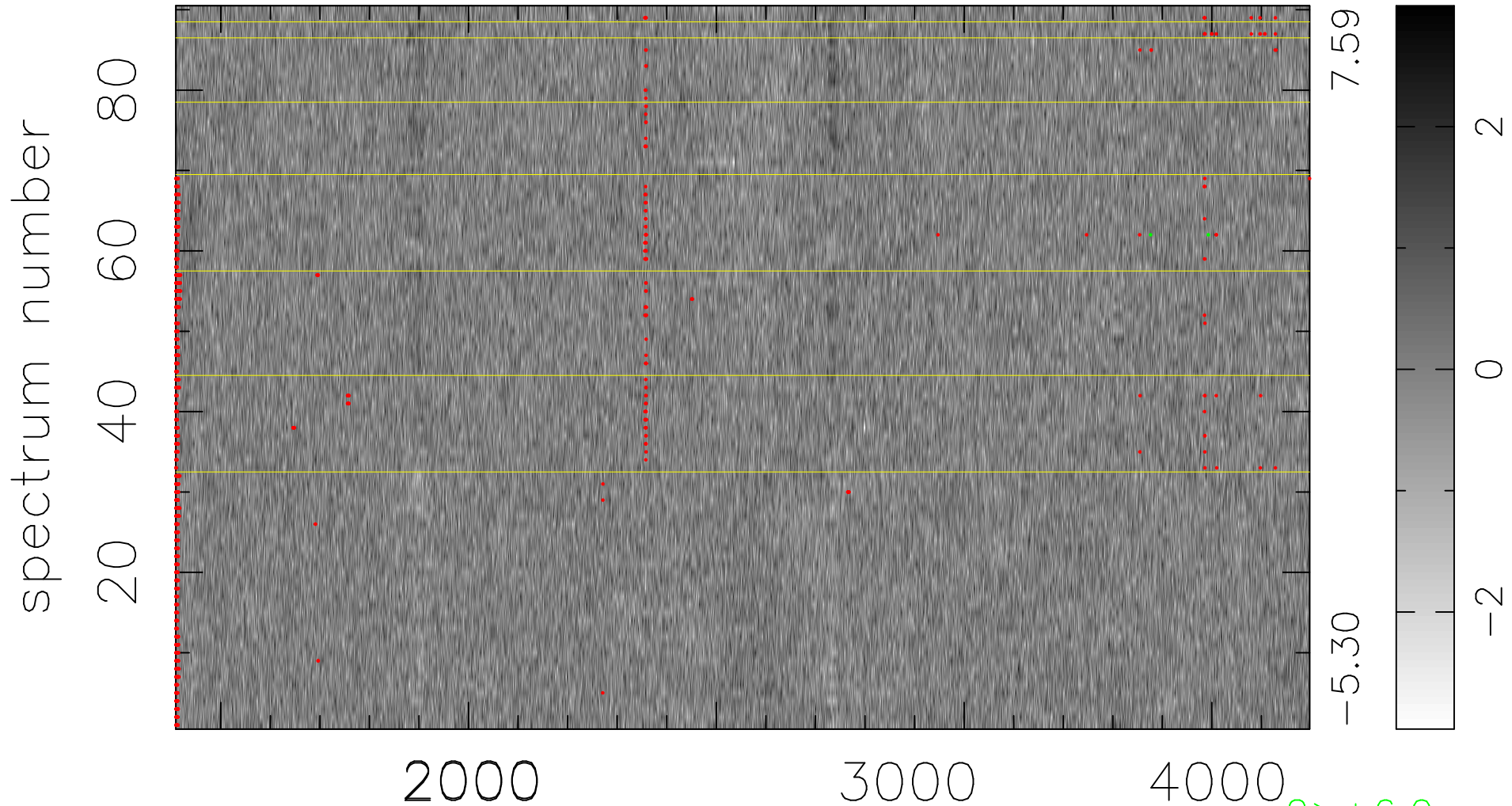


$$\chi(\lambda, t) = ( \text{Data} - \text{Model } AC_5 ) / \sigma \chi$$

$$\chi^2 / (411930 - 4967) = 0.958 \Rightarrow 1.007$$

4577x90



$2 > +6.0\sigma$

bad:953=0.23%     $\lambda$  (Å)     $z = 1.37113$