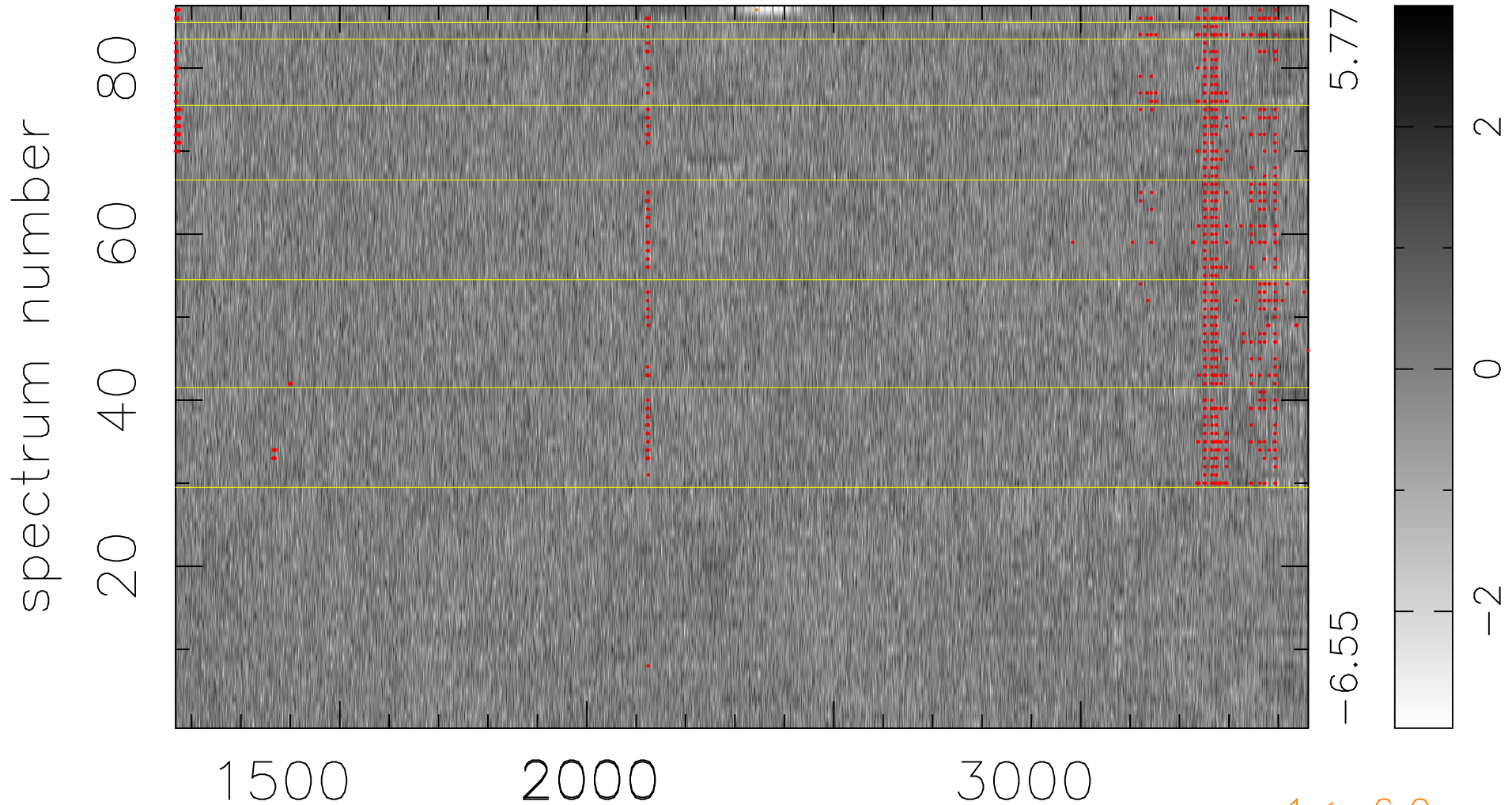


$$\chi(\lambda, t) = (\text{Data} - \text{Model } \text{AC}_5\text{B}_5\text{F}) / \sigma \chi$$

$$\chi^2 / (399069 - 5276) = 1.066 \Rightarrow 1.008$$

4587 × 87



bad:939=0.24%

λ (Å) $z = 1.64100$