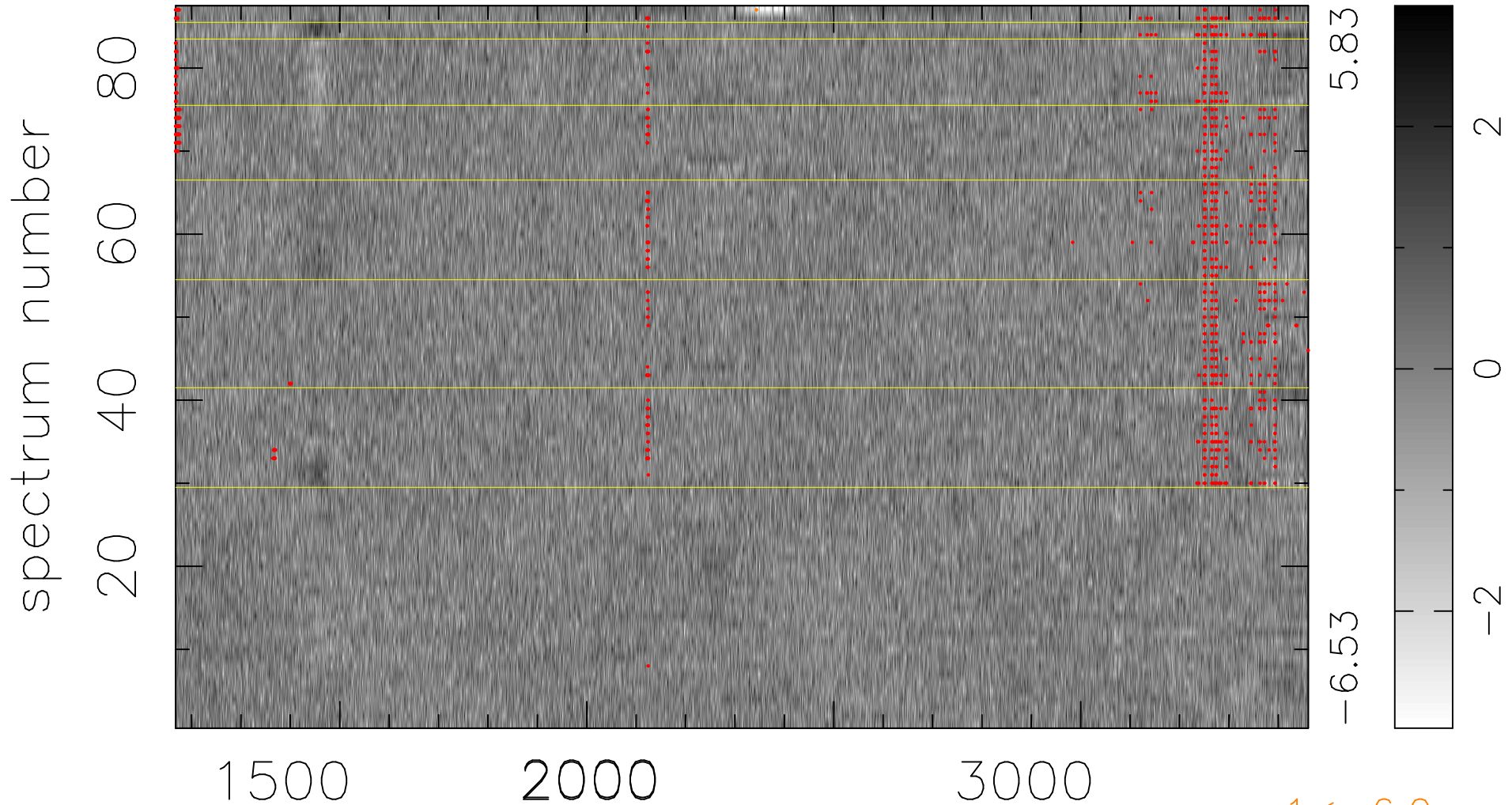


$$\chi(\lambda, t) = ( \text{Data} - \text{Model AC}_5\text{F} ) / \sigma \chi$$

$$\chi^2 / (399069 - 5134) = 1.073 \Rightarrow 1.007$$

4587 × 87



bad:939=0.24%

$\lambda$  (Å)  $z = 1.64100$