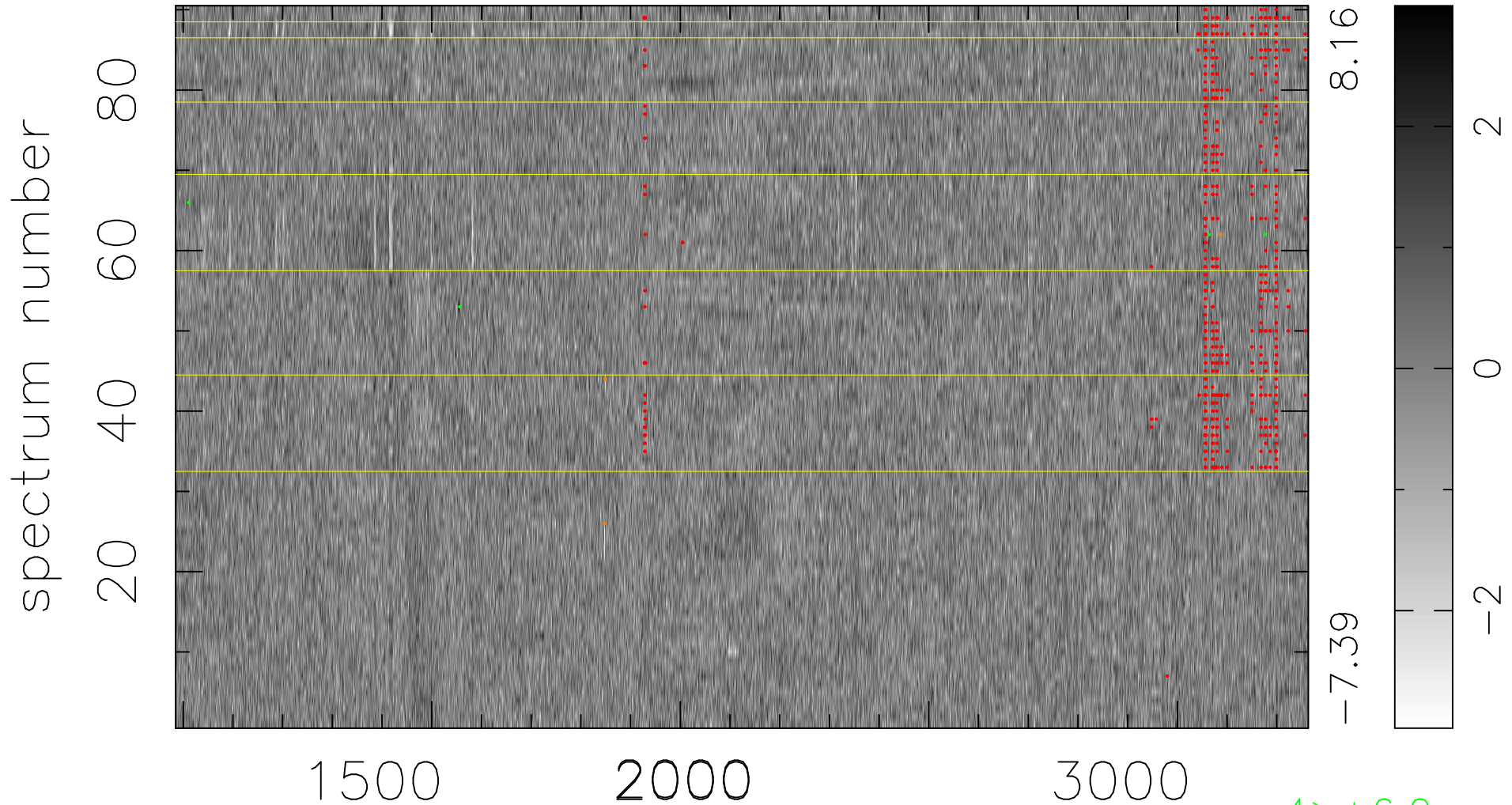


$$\chi(\lambda, t) = ( \text{Data} - \text{Model } \text{AC}_5\text{B}_5\text{F} ) / \sigma \chi$$

$$\chi^2 / (410220 - 5265) = 0.871 \Rightarrow 1.008$$

4558x90



bad:535=0.13%

$\lambda$  (Å)  $z = 1.88903$

4 > +6.0σ

3 < -6.0σ