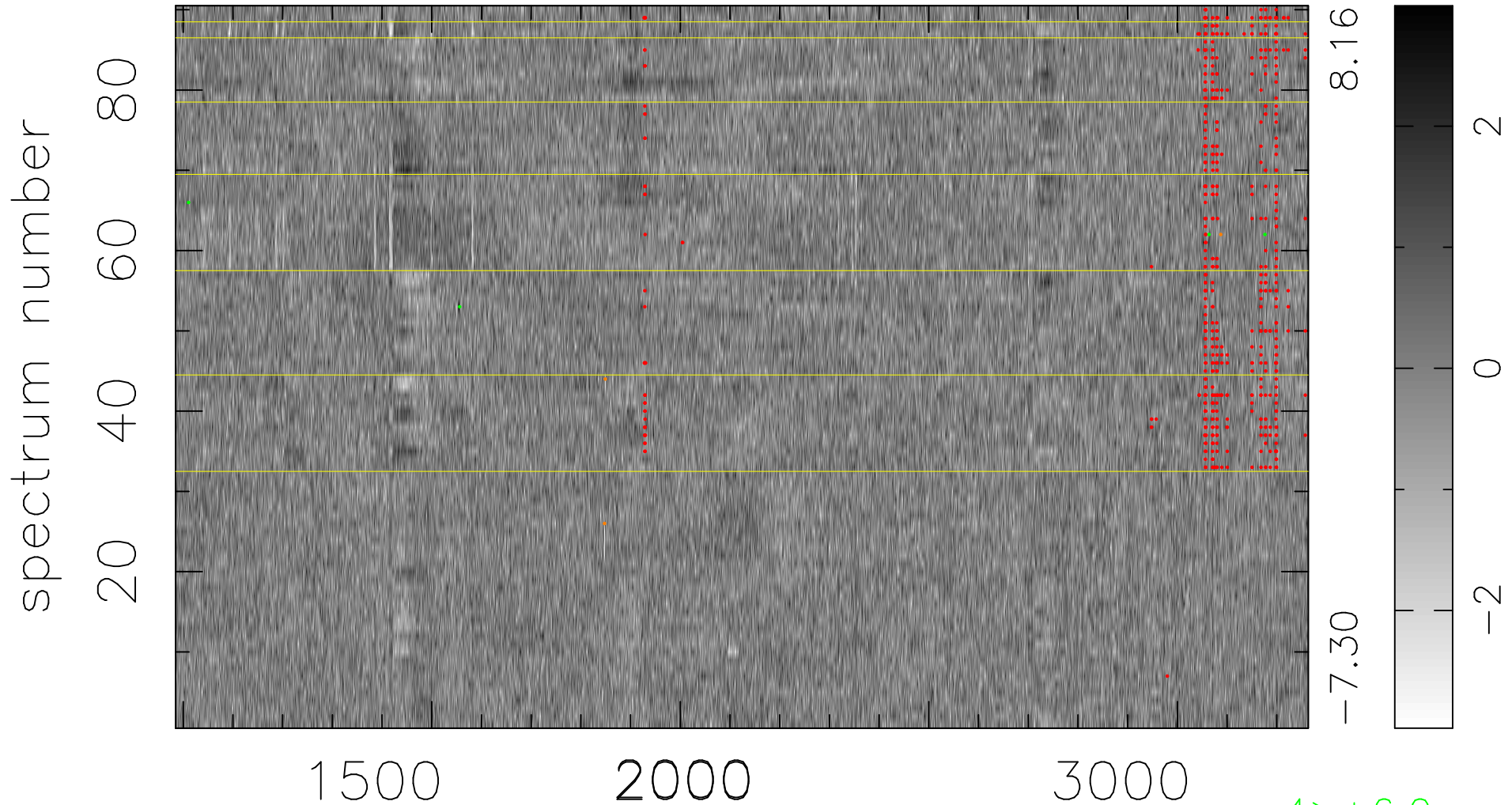


$$\chi(\lambda, t) = (\text{Data} - \text{Model AC}_5\text{F}) / \sigma \chi$$

$$\chi^2 / (410220 - 5131) = 0.884 \Rightarrow 1.007$$

4558x90



4 > +6.0σ

3 < -6.0σ

bad:535=0.13%

λ (Å) z = 1.88903