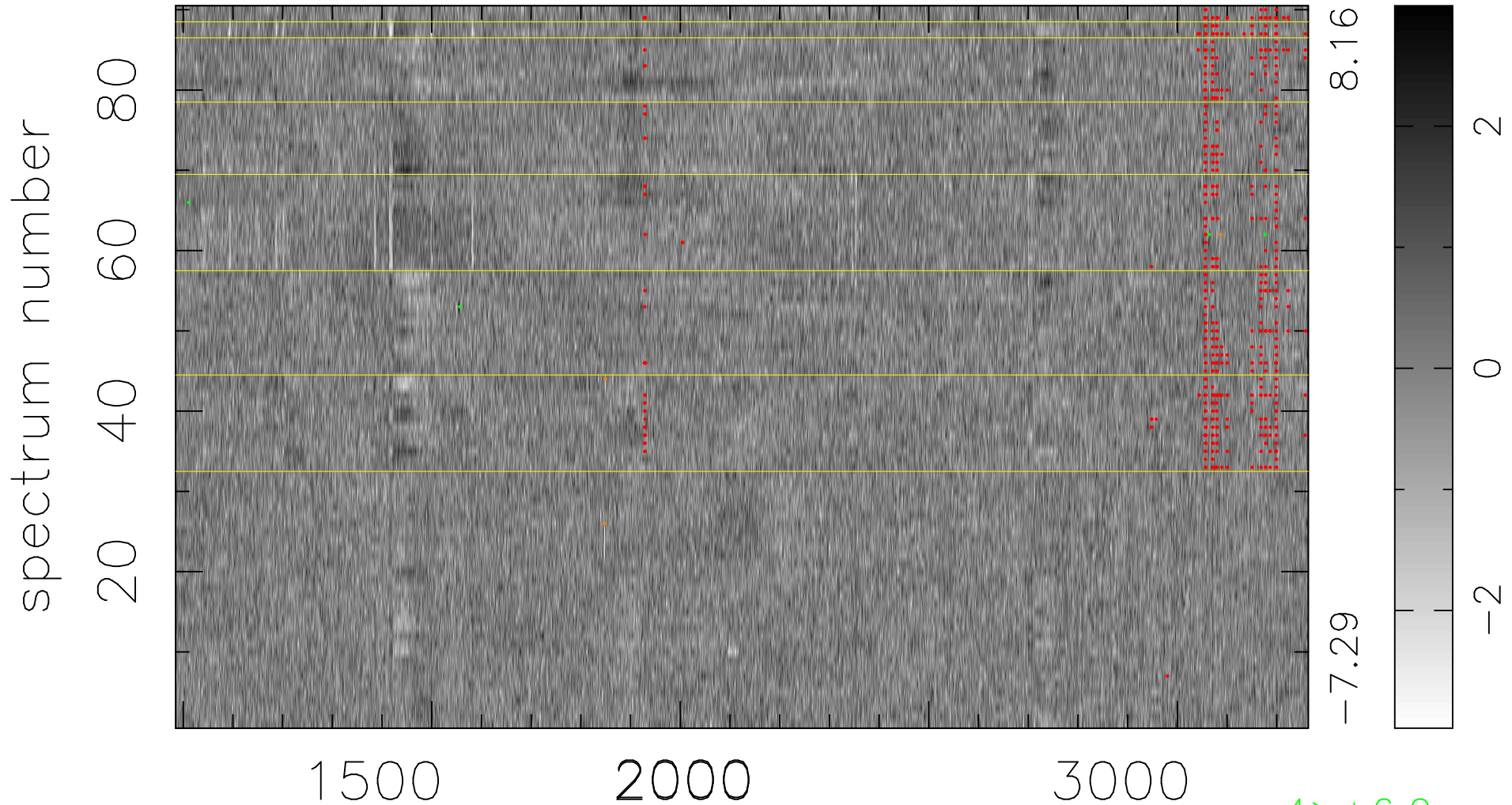


$$\chi(\lambda,t) = (\text{Data} - \text{Model } AC_5) / \sigma \chi$$

$$\chi^2 / (410220 - 5041) = 0.885 \Rightarrow 1.007$$

4558x90



bad:535=0.13%

λ (Å) $z = 1.88903$

4 > +6.0σ

3 < -6.0σ