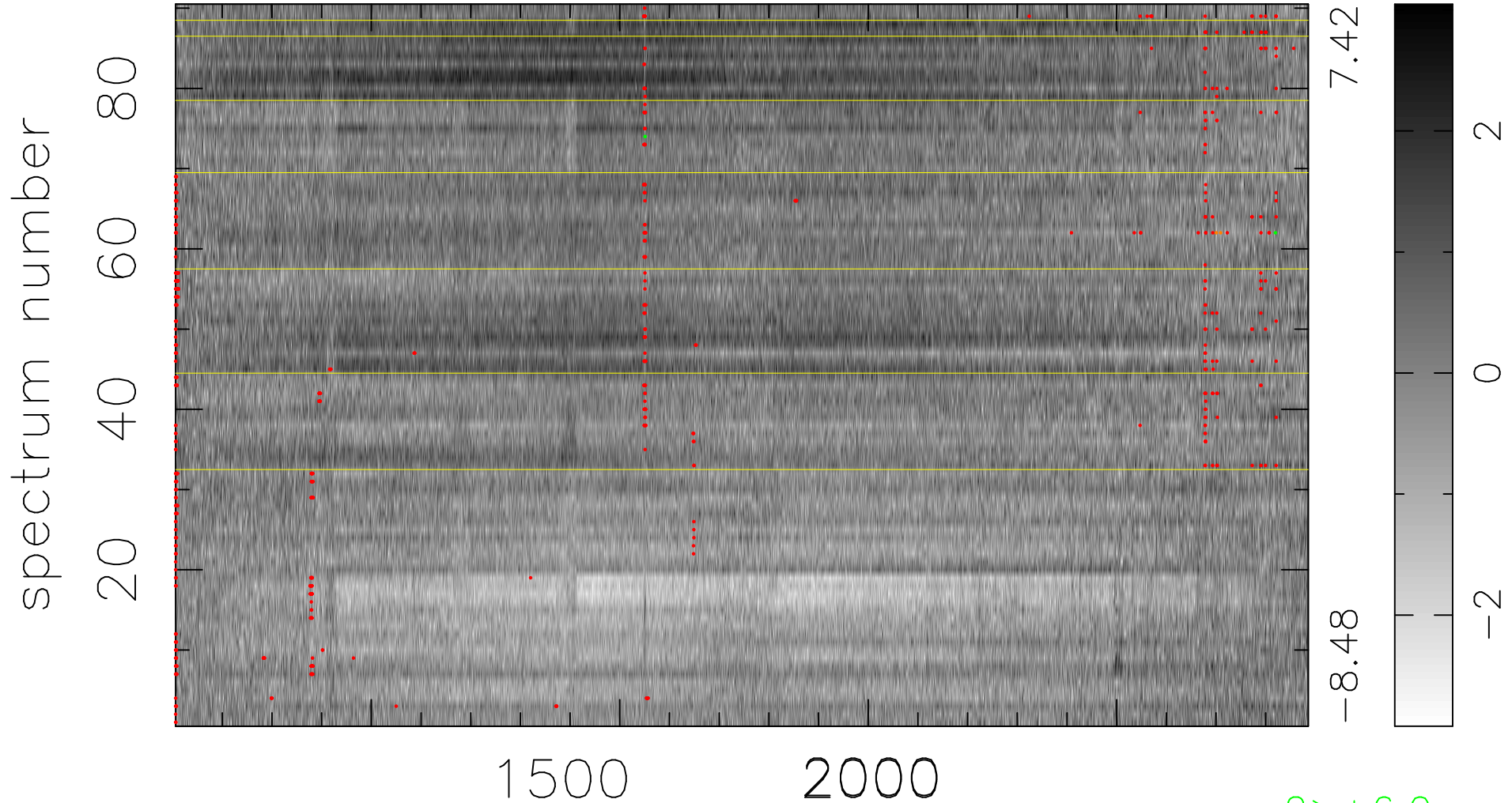


$$\chi(\lambda, t) = (\text{Data} - \text{Model A}) / \sigma \chi$$

$$\chi^2 / (410400 - 5233) = 1.678 \Rightarrow 1.009$$

4560x90



bad:652=0.16%

$\lambda$  (Å)  $z = 2.43861$

$2 > +6.0\sigma$

$2 < -6.0\sigma$