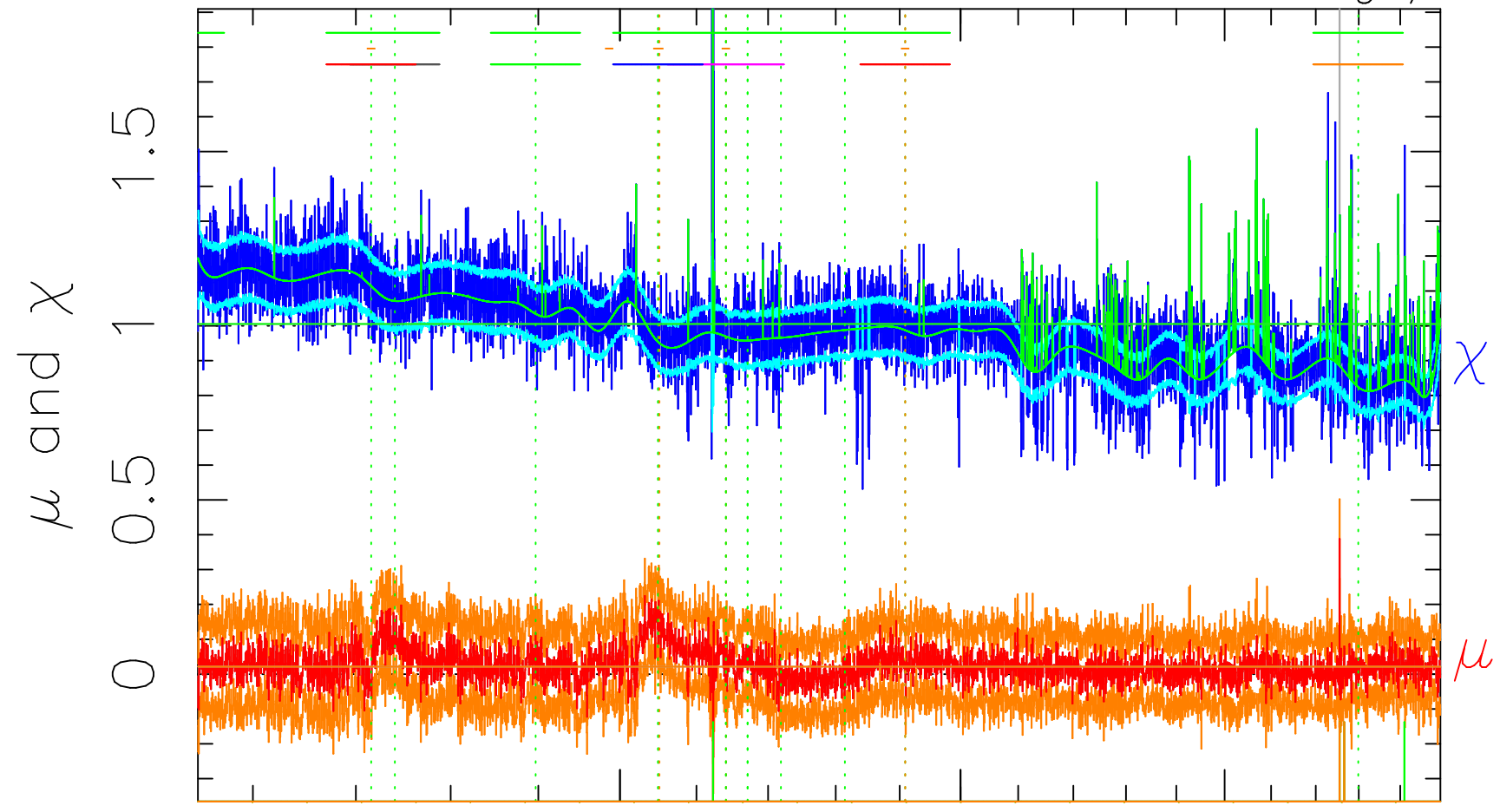


$$\mu = 0.022(28) \quad \chi = 1.005(87) \Rightarrow 1.005(87)$$

rm633

med(mad)

AC<sub>5</sub>B<sub>7</sub>F



1500 2000

$\lambda$  (Å)  $z = 2.43861$

$2 > +6.0\sigma$   
 $2 < -6.0\sigma$