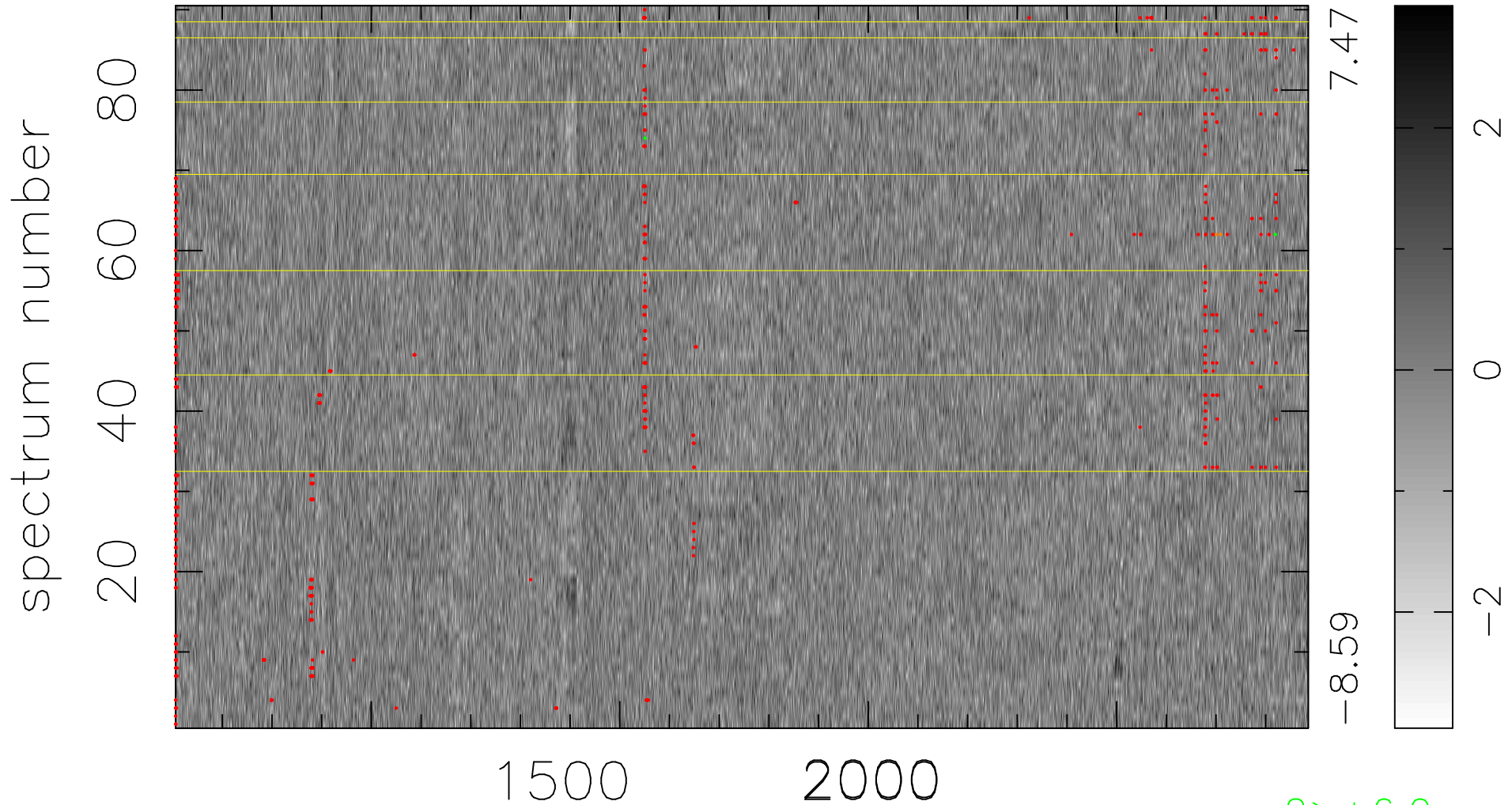


$$\chi(\lambda, t) = ( \text{Data} - \text{Model } \text{AC}_5\text{B}_7\text{F} ) / \sigma \chi$$

$$\chi^2 / (410400 - 5425) = 1.070 \Rightarrow 1.008$$

4560x90



bad:652=0.16%

$\lambda$  (Å)  $z = 2.43861$

$2 > +6.0\sigma$

$2 < -6.0\sigma$