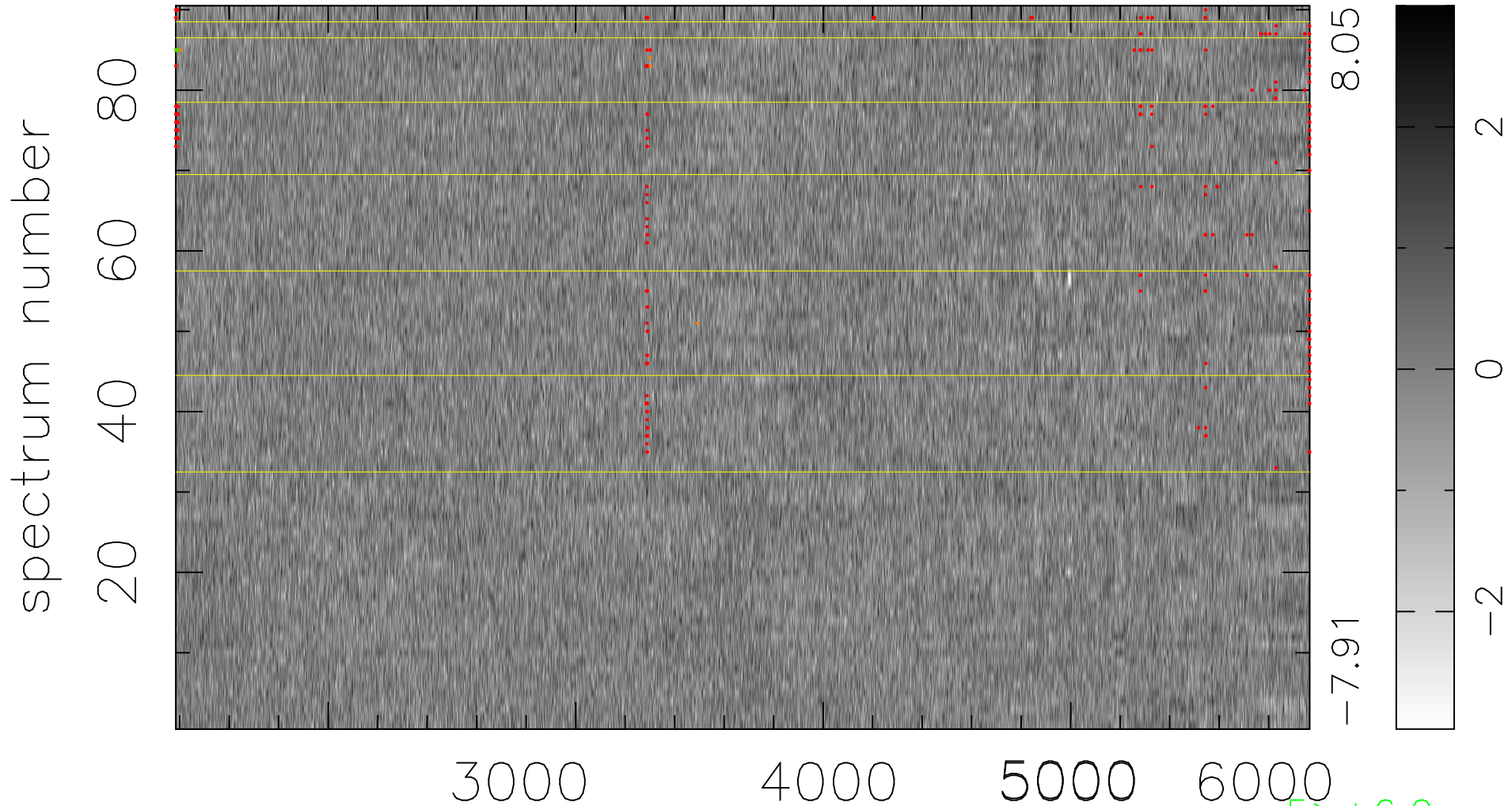


$$\chi(\lambda, t) = (\text{Data} - \text{Model } AC_5) / \sigma \chi$$

$$\chi^2 / (412380 - 4882) = 0.911 \Rightarrow 1.007$$

4582x90



bad:279=0.068% λ (Å) $z = 0.65064$

5 > +6.0σ

8 < -6.0σ