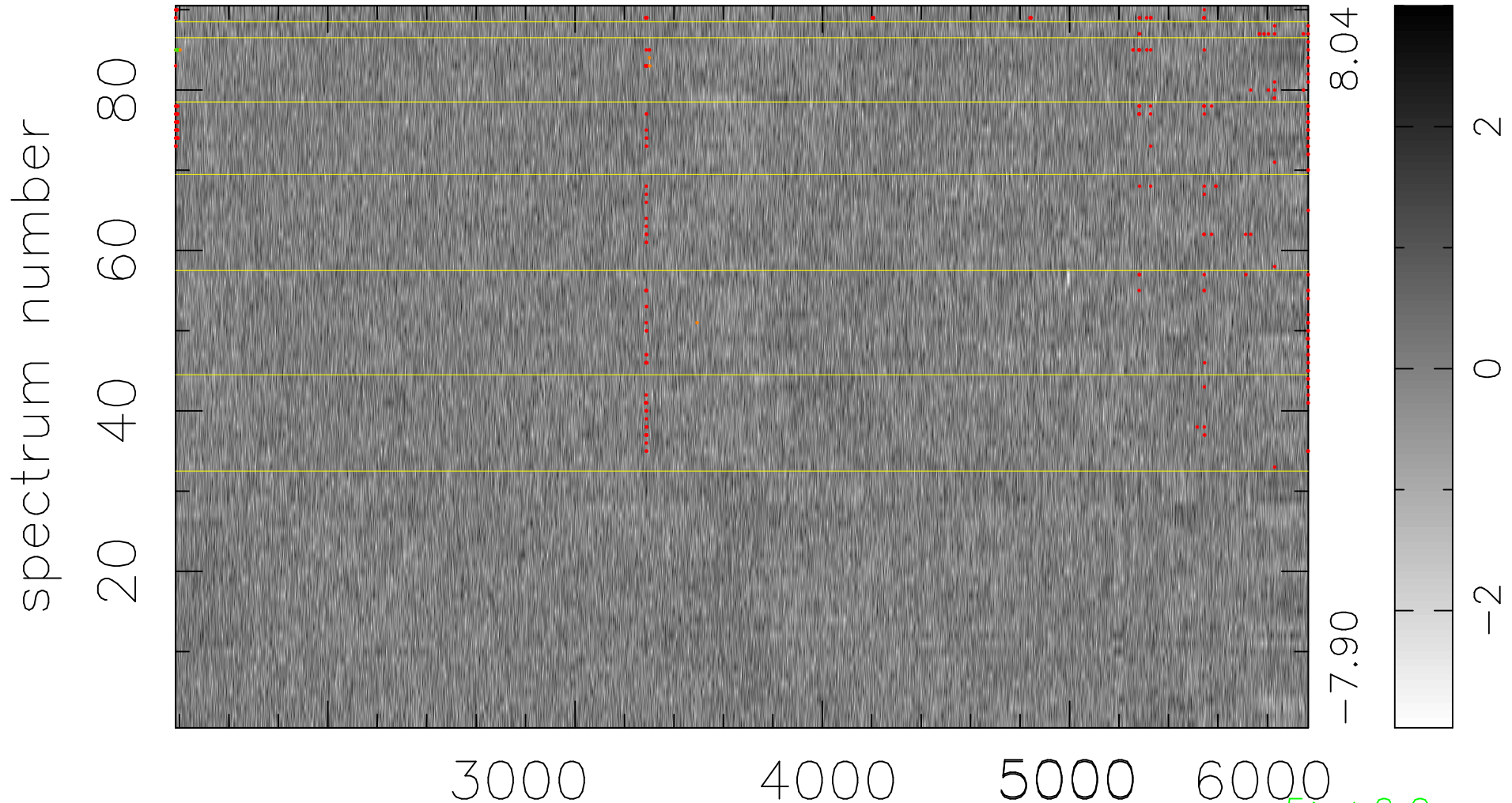


$$\chi(\lambda, t) = (\text{Data} - \text{Model } \text{AC}_5\text{B}_3\text{F}) / \sigma \chi$$

$$\chi^2 / (412380 - 5112) = 0.909 \Rightarrow 1.007$$

4582x90



bad:279=0.068% λ (Å) $z = 0.65064$

5 > +6.0σ

8 < -6.0σ