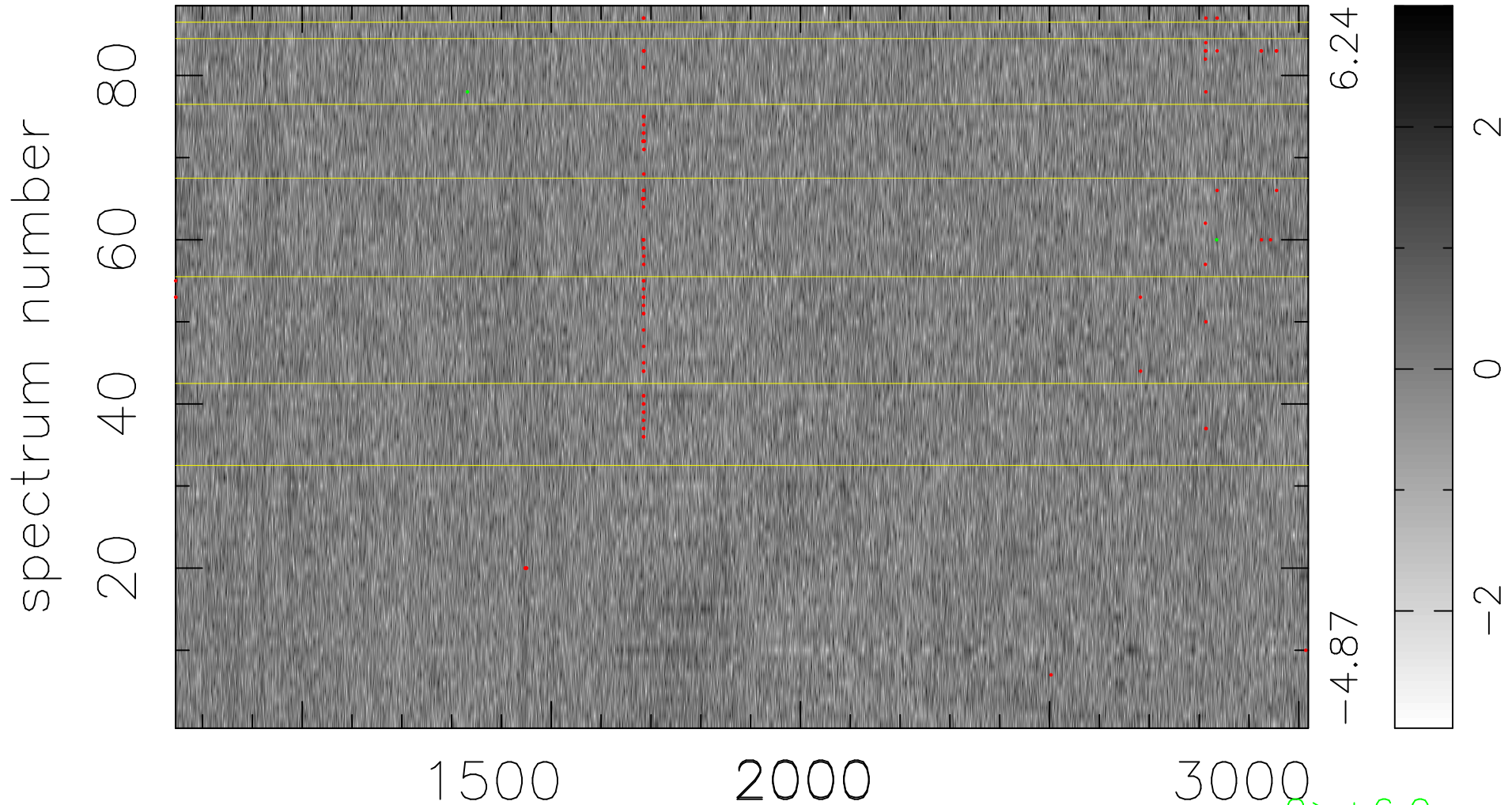


$$\chi(\lambda, t) = ( \text{Data} - \text{Model } \text{AC}_5\text{B}_7\text{F} ) / \sigma \chi$$

$$\chi^2 / (400136 - 5461) = 0.888 \Rightarrow 1.008$$

4547x88



bad:97=0.024%

$\lambda$  (Å)  $z = 2.23214$