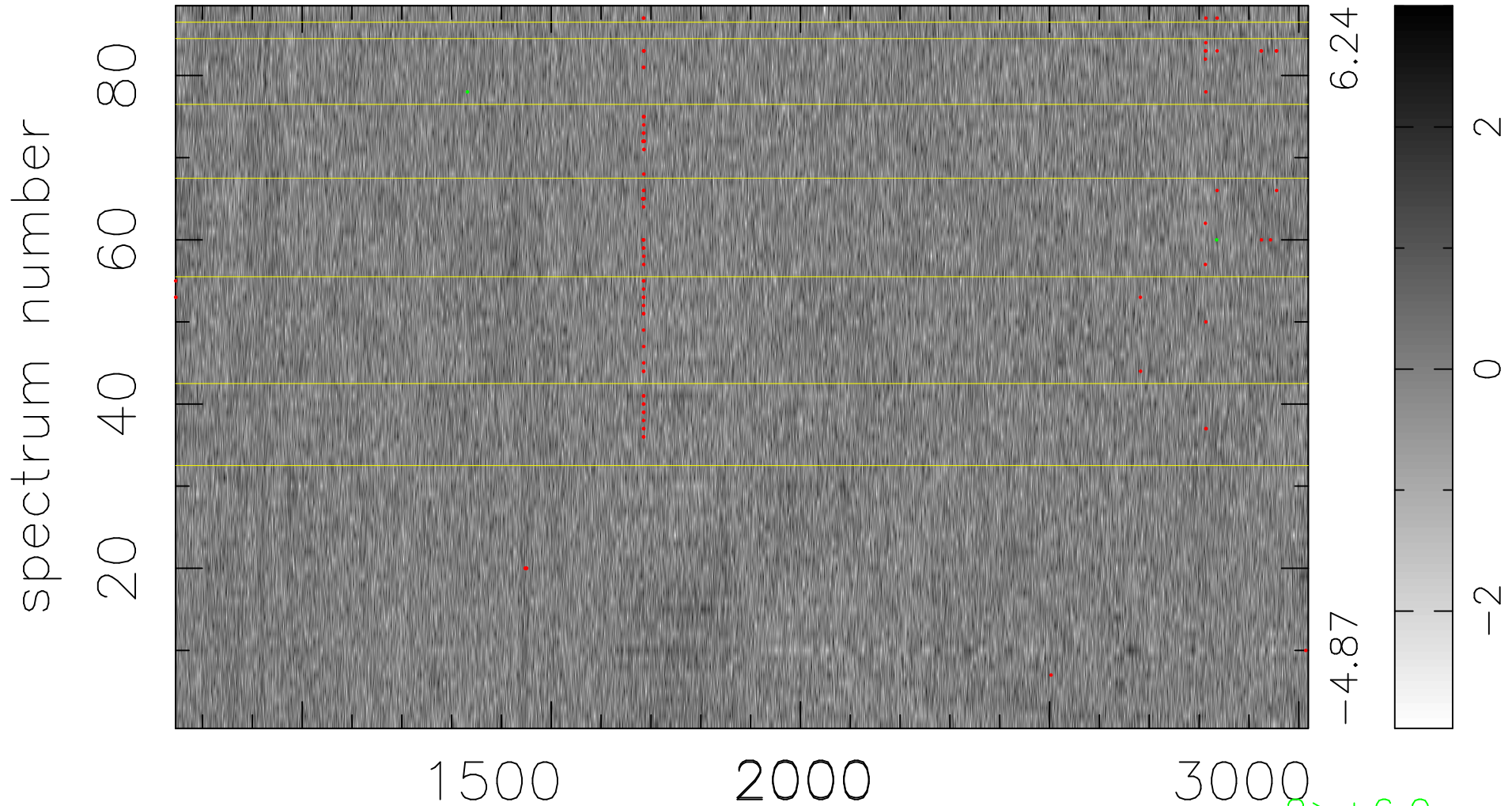


$$\chi(\lambda, t) = (\text{Data} - \text{Model } \text{AC}_5\text{B}_7\text{F}) / \sigma \chi$$

$$\chi^2 / (400136 - 5461) = 0.888 \Rightarrow 1.008$$

4547x88



bad:97=0.024%

λ (Å) $z = 2.23214$