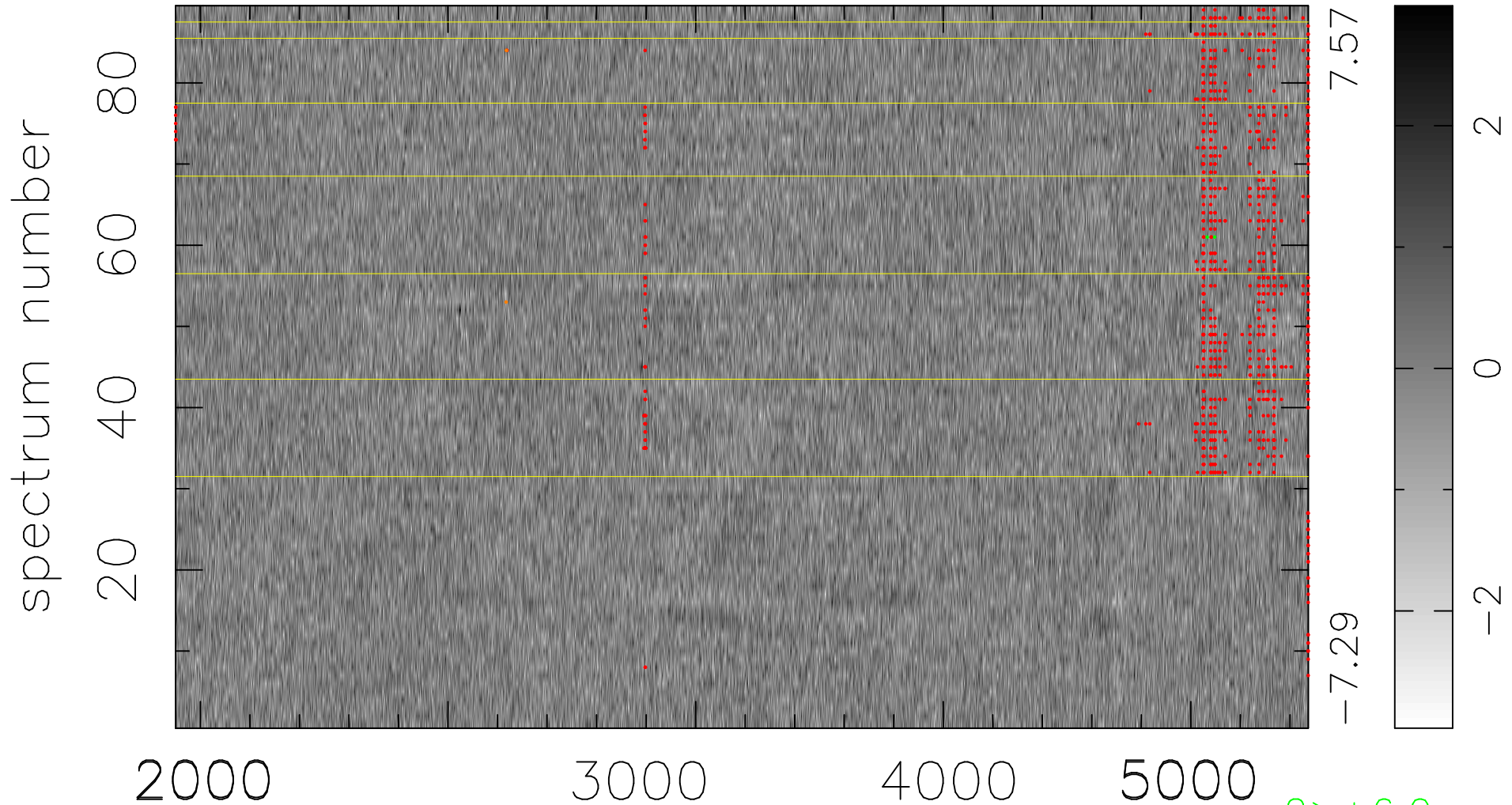


$$\chi(\lambda, t) = ( \text{Data} - \text{Model } \text{AC}_5\text{B}_3\text{F} ) / \sigma \chi$$

$$\chi^2 / (407175 - 5137) = 0.931 \Rightarrow 1.006$$

4575x89



bad:842=0.21%

$\lambda$  (Å)  $z = 0.84885$

$2 > +6.0\sigma$

$2 < -6.0\sigma$