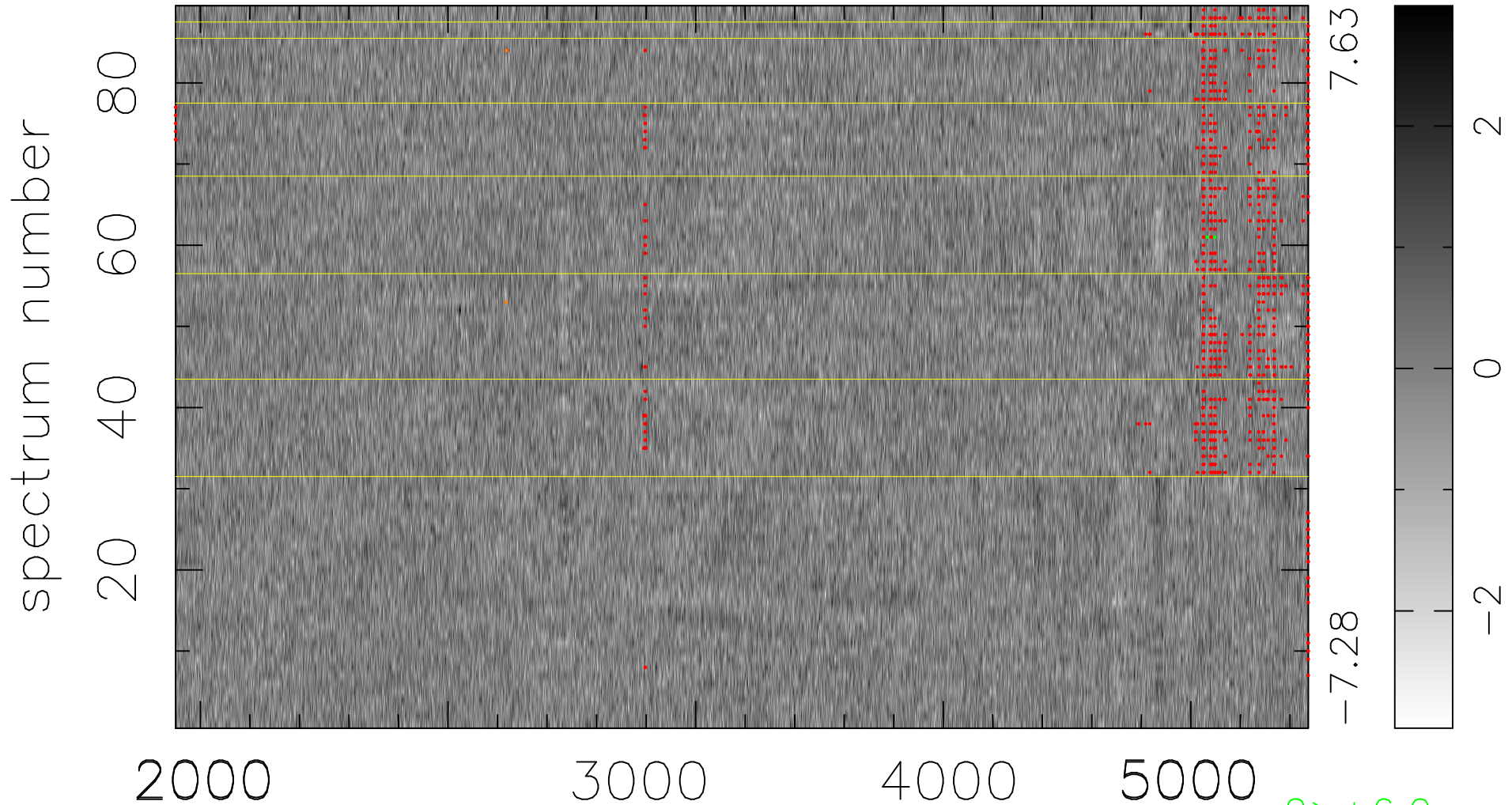


$$\chi(\lambda,t) = (\text{Data} - \text{Model } AC_5) / \sigma \chi$$

$$\chi^2 / (407175 - 4866) = 0.937 \Rightarrow 1.006$$

4575x89



bad:842=0.21%

λ (Å) $z = 0.84885$

$2 > +6.0\sigma$

$2 < -6.0\sigma$