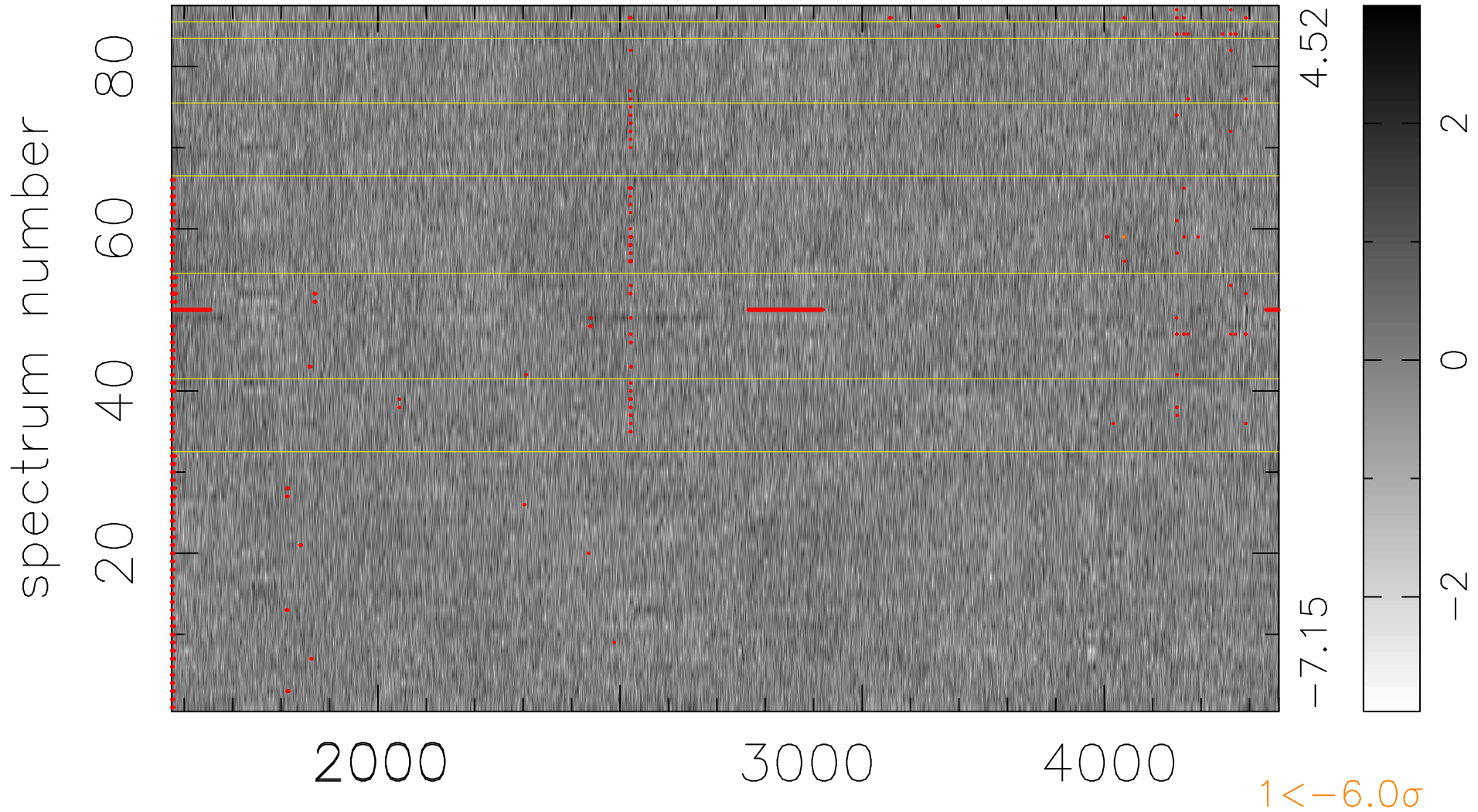


$$\chi(\lambda, t) = (\text{Data} - \text{Model } \text{AC}_5\text{B}_4\text{F}) / \sigma \chi$$

$$\chi^2 / (397938 - 5140) = 0.932 \Rightarrow 1.008$$

4574x87



bad:1400=0.35% λ (Å) $z = 1.19832$