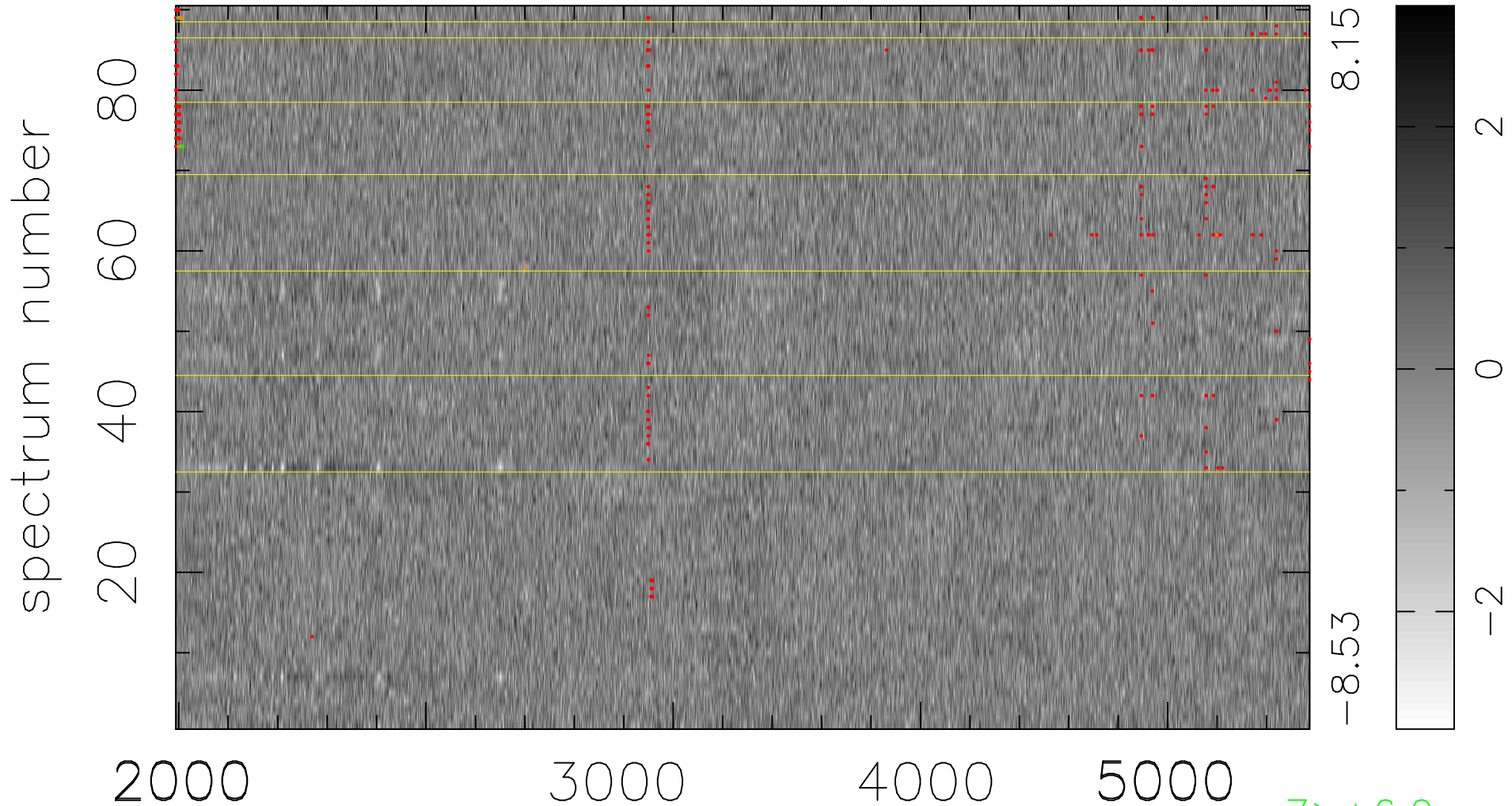


$$\chi(\lambda, t) = (\text{Data} - \text{Model } \text{AC}_5\text{B}_3\text{F}) / \sigma \chi$$

$$\chi^2 / (412830 - 5161) = 0.968 \Rightarrow 1.007$$

4587x90



bad:375=0.091% λ (Å) $z = 0.80549$

7 > +6.0 σ
11 < -6.0 σ