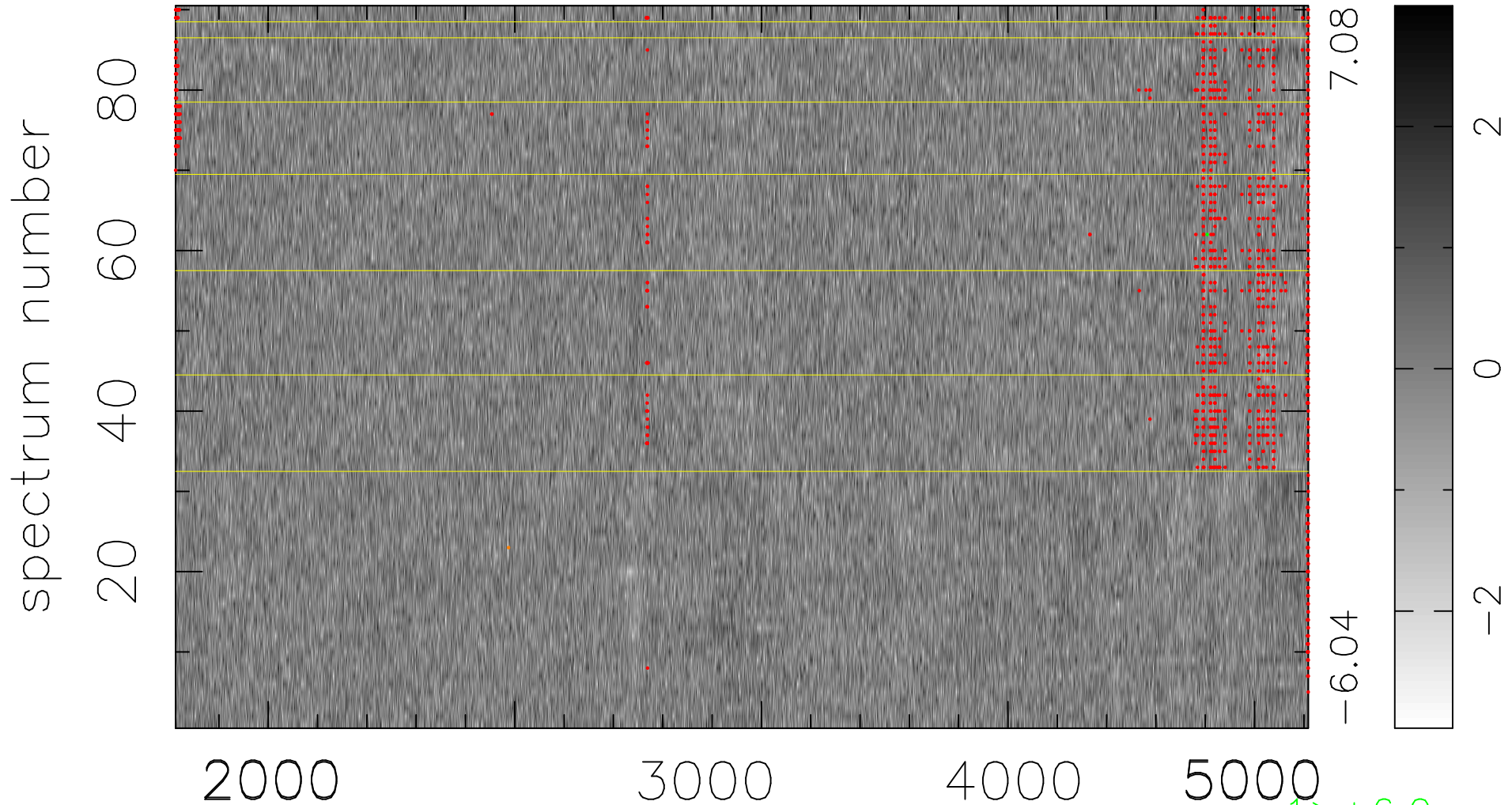


$$\chi(\lambda, t) = ( \text{Data} - \text{Model AC}_5\text{F} ) / \sigma \chi$$

$$\chi^2 / (413460 - 5056) = 0.971 \Rightarrow 1.007$$

4594x90



bad:1238=0.30%  $\lambda$  (Å)  $z = 0.96218$

$\uparrow > +6.0\sigma$

$\downarrow < -6.0\sigma$