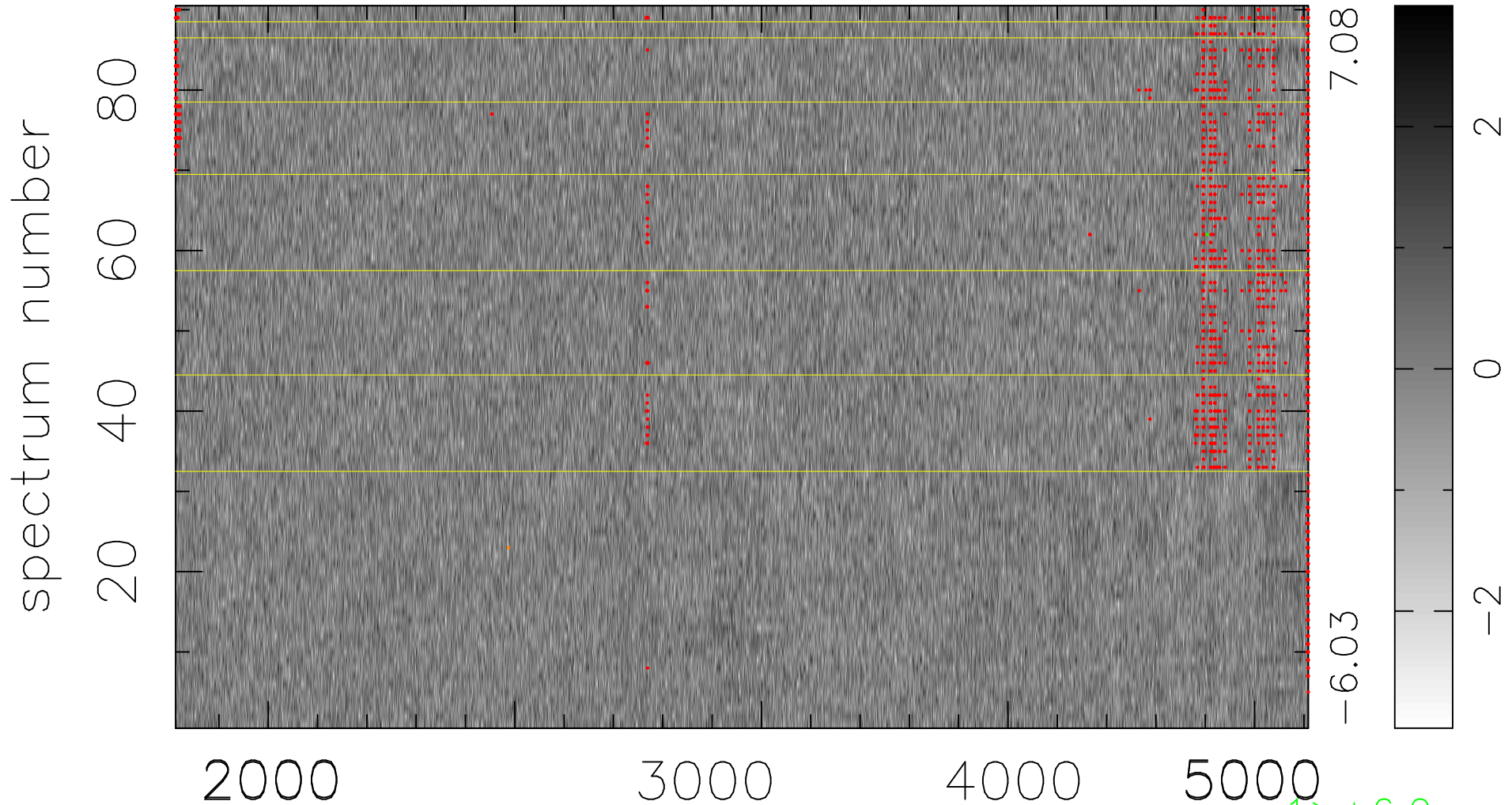


$$\chi(\lambda, t) = (\text{Data} - \text{Model } \text{AC}_5\text{B}_4\text{F}) / \sigma \chi$$

$$\chi^2 / (413460 - 5237) = 0.971 \Rightarrow 1.008$$

4594x90



7.08

-6.03

2

0

-2

$\uparrow > +6.0\sigma$

$\downarrow < -6.0\sigma$

bad:1238=0.30% λ (Å) $z = 0.96218$