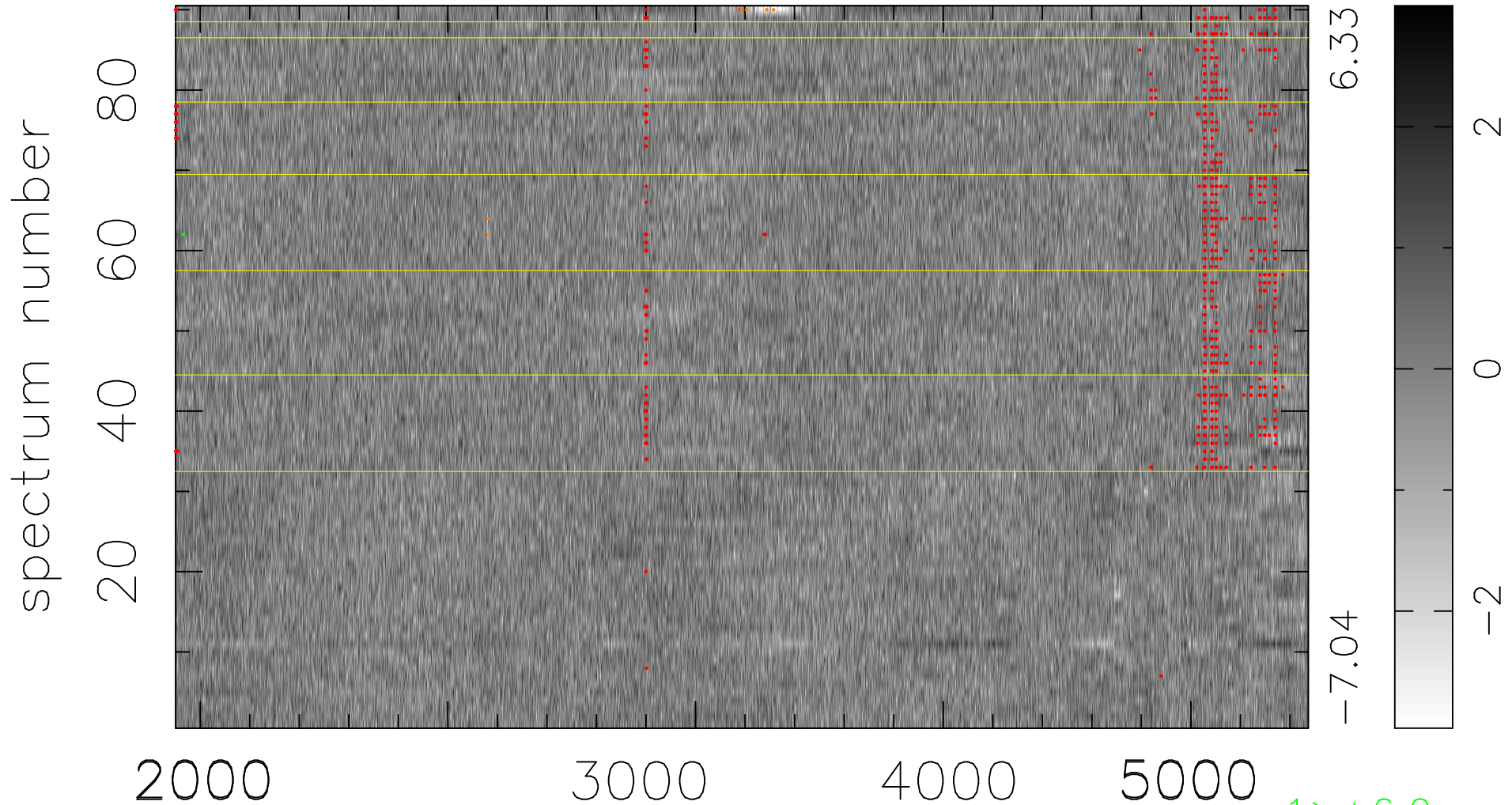


$$\chi(\lambda, t) = ( \text{Data} - \text{Model } \text{AC}_5\text{B}_3\text{F} ) / \sigma \chi$$

$$\chi^2 / (411660 - 5106) = 1.084 \Rightarrow 1.008$$

4574x90



bad:664=0.16%

$\lambda$  (Å)  $z = 0.84682$

1 > +6.0 $\sigma$

6 < -6.0 $\sigma$