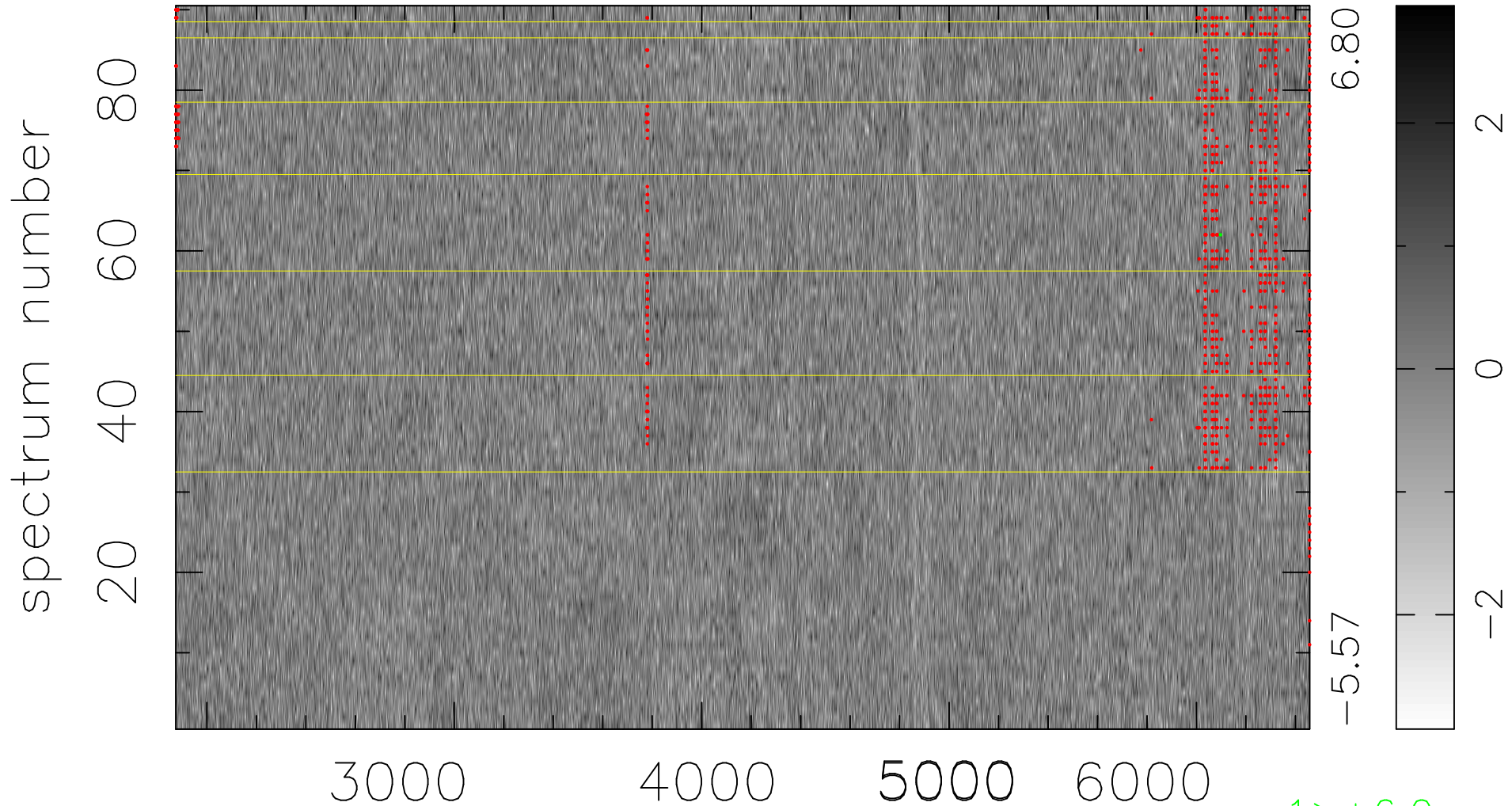


$$\chi(\lambda, t) = (\text{Data} - \text{Model } \text{AC}_5\text{B}_4\text{F}) / \sigma \chi$$

$$\chi^2 / (412560 - 5227) = 0.889 \Rightarrow 0.994$$

4584 × 90



bad:821=0.20%

λ (Å) $z = 0.47389$