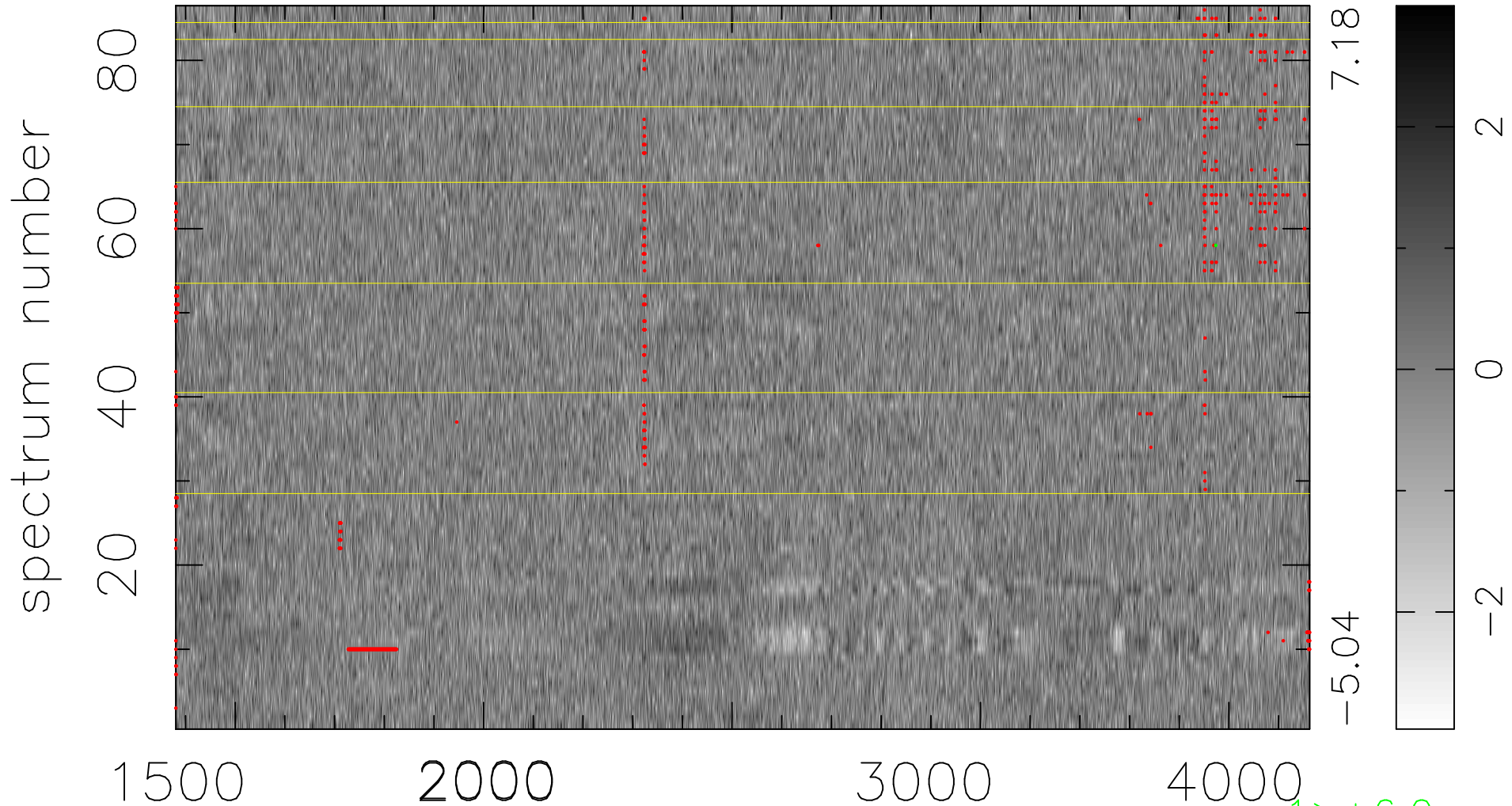


$$\chi(\lambda, t) = (\text{Data} - \text{Model } \text{AC}_5\text{B}_4\text{F}) / \sigma \chi$$

$$\chi^2 / (392590 - 5172) = 0.942 \Rightarrow 1.008$$

4565x86



7.18

-5.04

1 > +6.0σ

bad:663=0.17% λ (Å) $z = 1.40887$