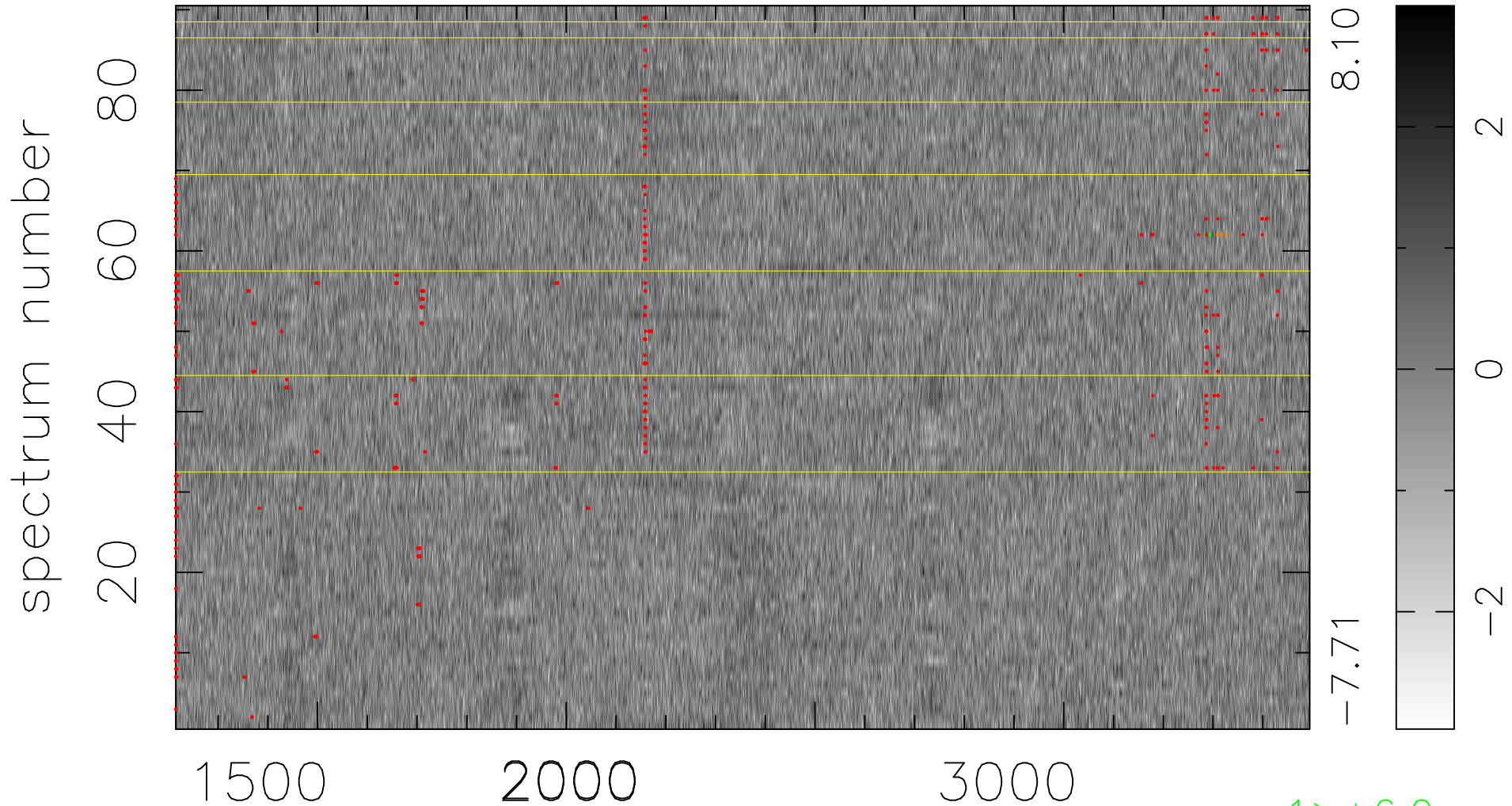


$$\chi(\lambda, t) = ( \text{Data} - \text{Model AC}_5\text{F} ) / \sigma \chi$$

$$\chi^2 / (410310 - 5128) = 1.027 \Rightarrow 1.007$$

4559x90



bad:562=0.14%

$\lambda$  (Å)  $z = 1.59881$

1 > +6.0σ

3 < -6.0σ