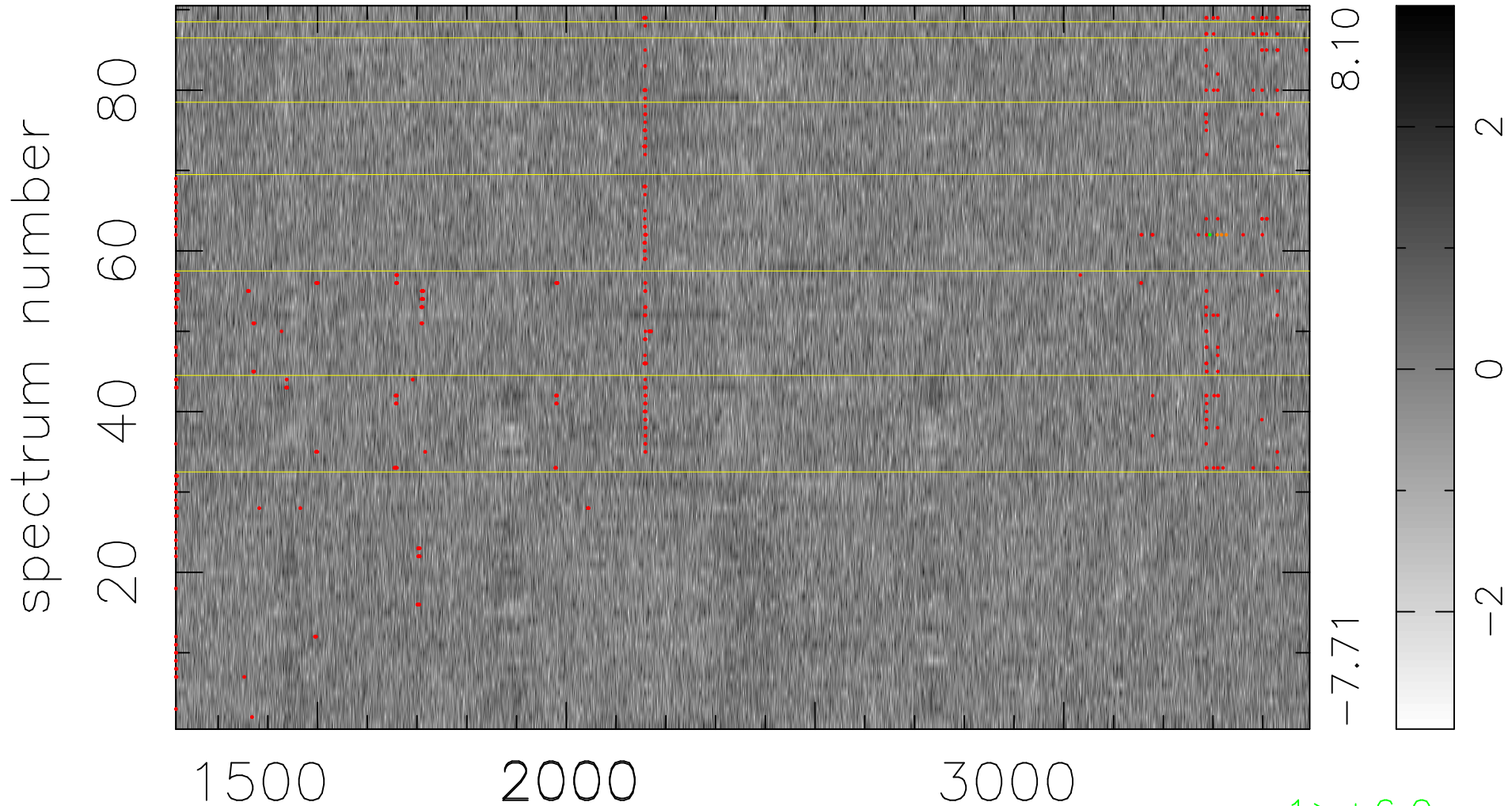


$$\chi(\lambda,t) = (\text{Data} - \text{Model } AC_5) / \sigma \chi$$

$$\chi^2 / (410310 - 5038) = 1.027 \Rightarrow 1.007$$

4559x90



bad:562=0.14%

λ (Å) $z = 1.59881$

1 > +6.0σ

3 < -6.0σ