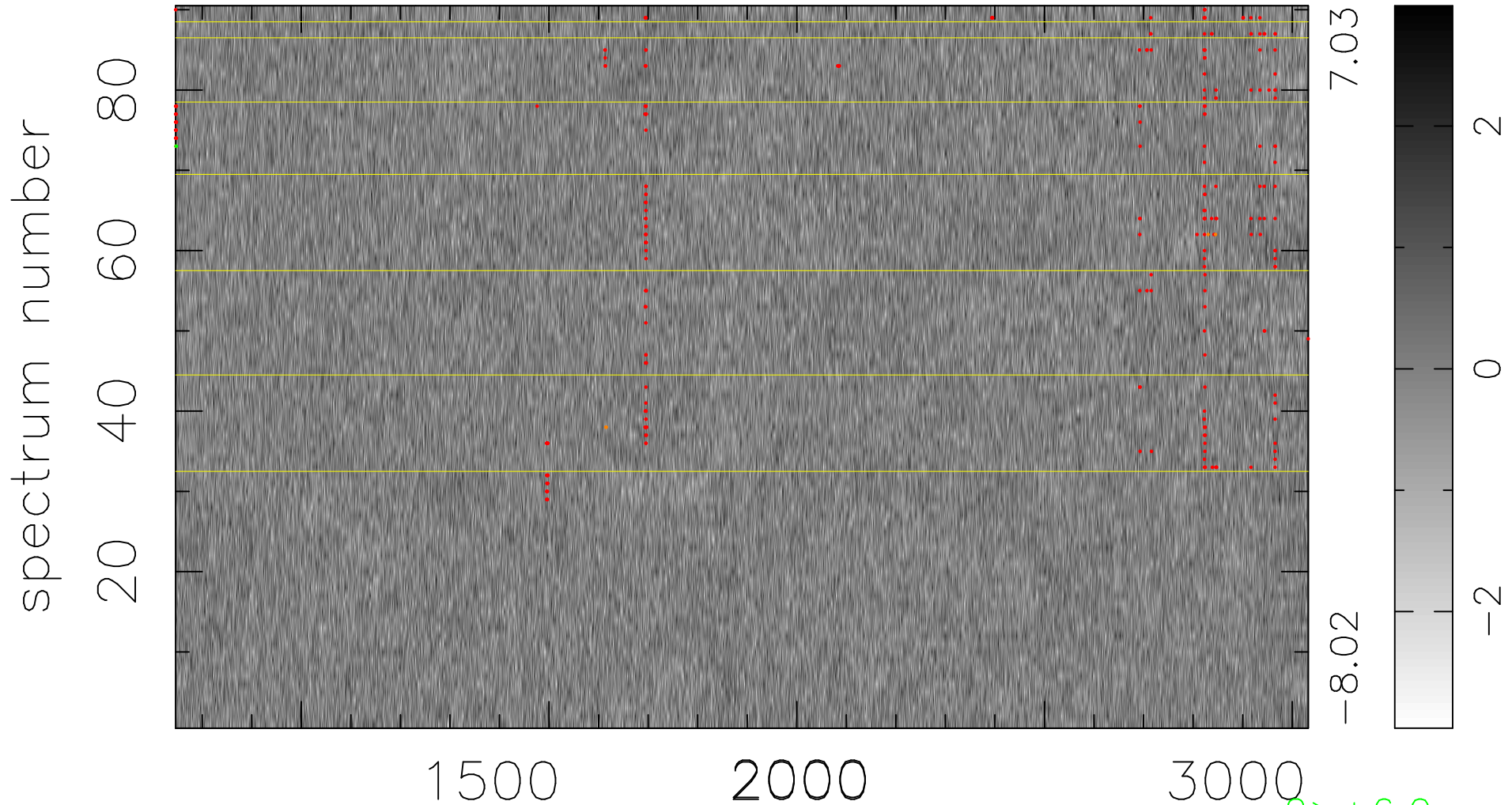


$$\chi(\lambda, t) = (\text{Data} - \text{Model } \text{AC}_5\text{B}_7\text{F}) / \sigma \chi$$

$$\chi^2 / (411570 - 5493) = 0.933 \Rightarrow 1.005$$

4573x90



7.03
-8.02

2
0
-2

2 > +6.0σ

5 < -6.0σ

bad:279=0.068% λ (Å) z = 2.21687