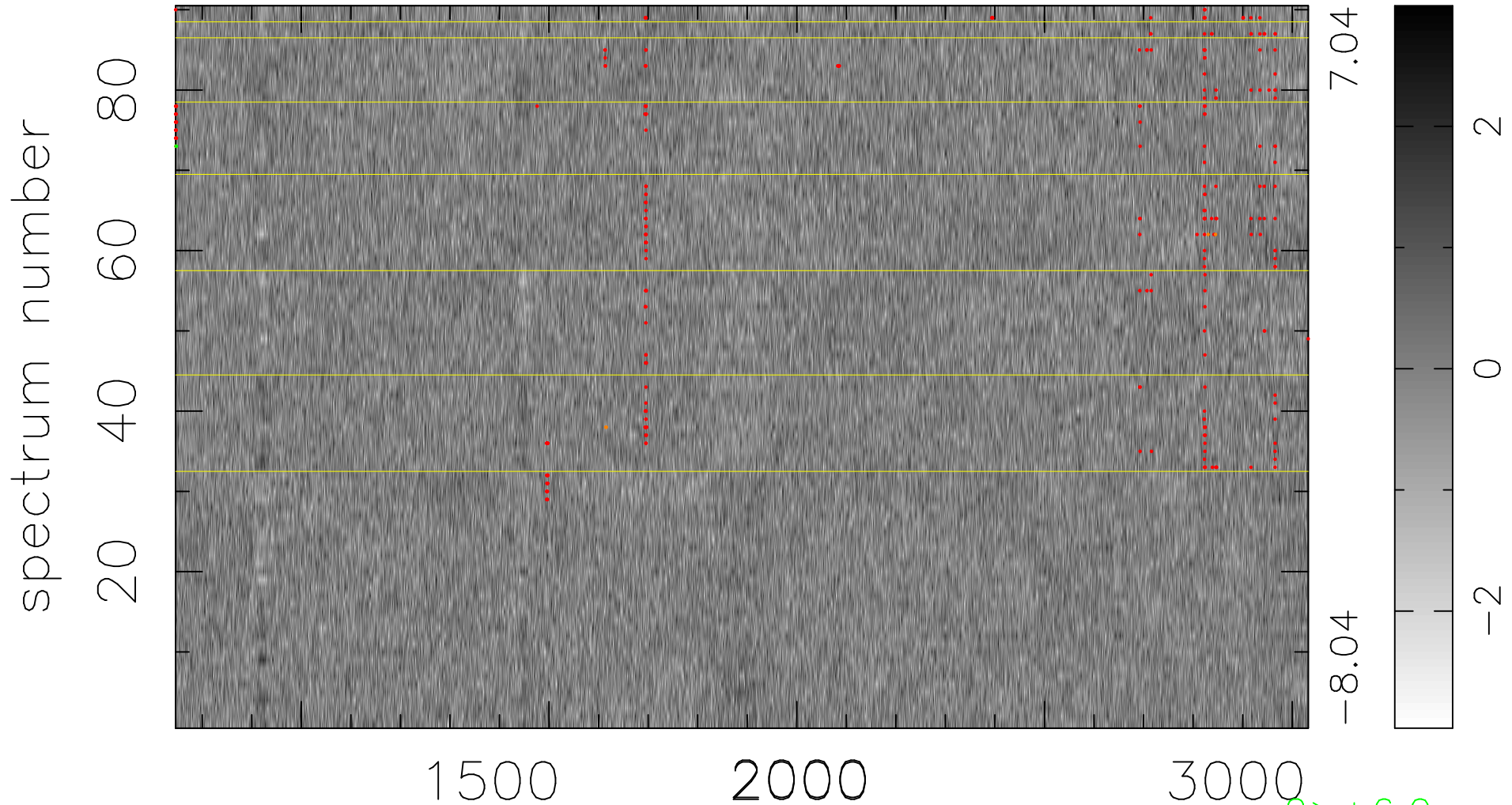


$$\chi(\lambda,t) = (\text{Data} - \text{Model } AC_5) / \sigma \chi$$

$$\chi^2 / (411570 - 5259) = 0.941 \Rightarrow 1.006$$

4573x90



bad:279=0.068% λ (Å) $z = 2.21687$

2 > +6.0σ

5 < -6.0σ