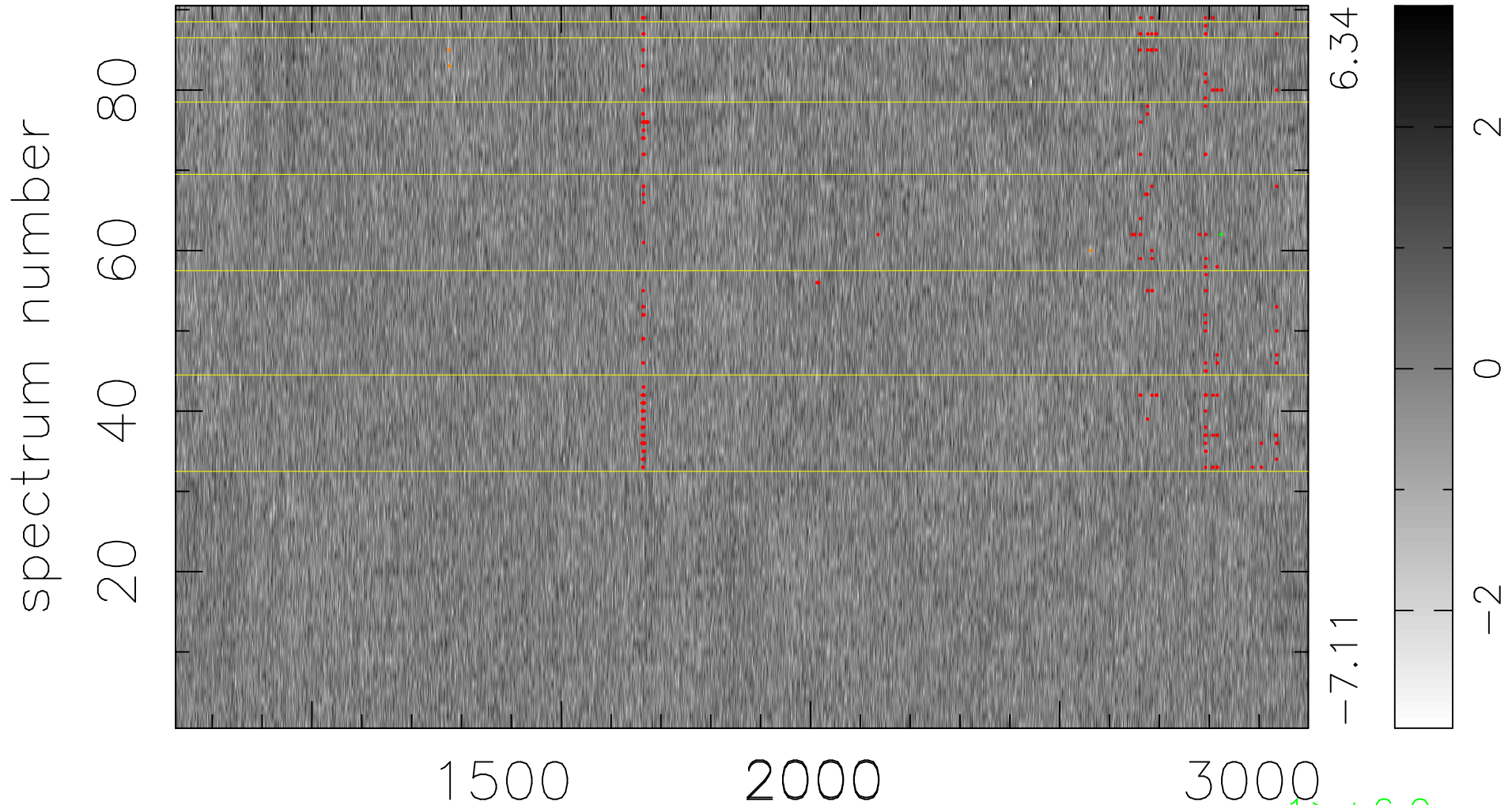


$$\chi(\lambda, t) = (\text{Data} - \text{Model AC}_5\text{B}_7\text{F}) / \sigma \chi$$

$$\chi^2 / (409050 - 5476) = 0.940 \Rightarrow 1.009$$

4545x90



bad:245=0.060% λ (Å) $z = 2.26205$

1 > +6.0σ
3 < -6.0σ