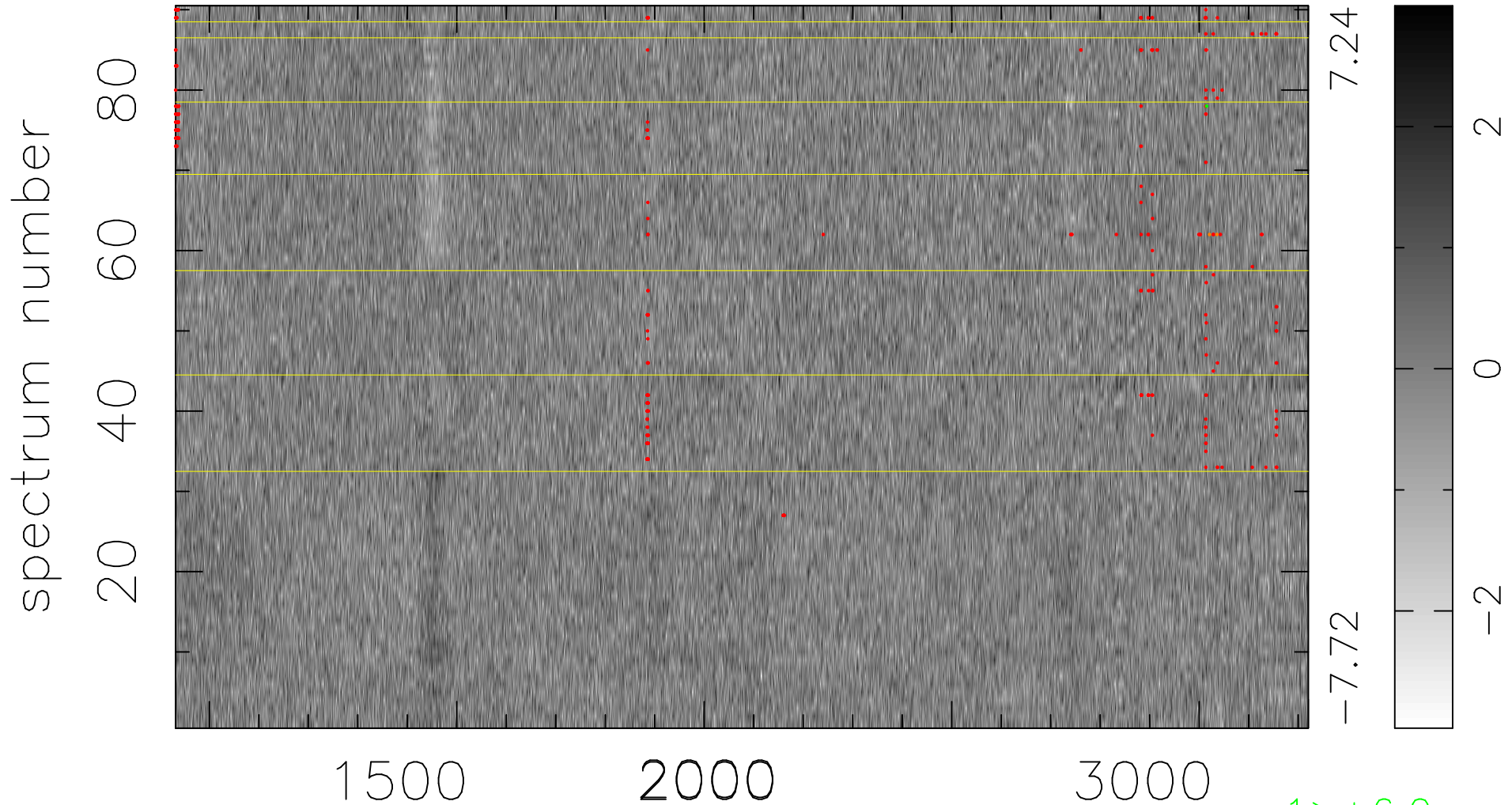


$$\chi(\lambda, t) = ( \text{Data} - \text{Model } AC_5 ) / \sigma \chi$$

$$\chi^2 / (412020 - 5154) = 0.942 \Rightarrow 1.007$$

4578x90



bad:309=0.075%  $\lambda$  (Å)  $z = 1.94659$

1 > +6.0 $\sigma$

2 < -6.0 $\sigma$