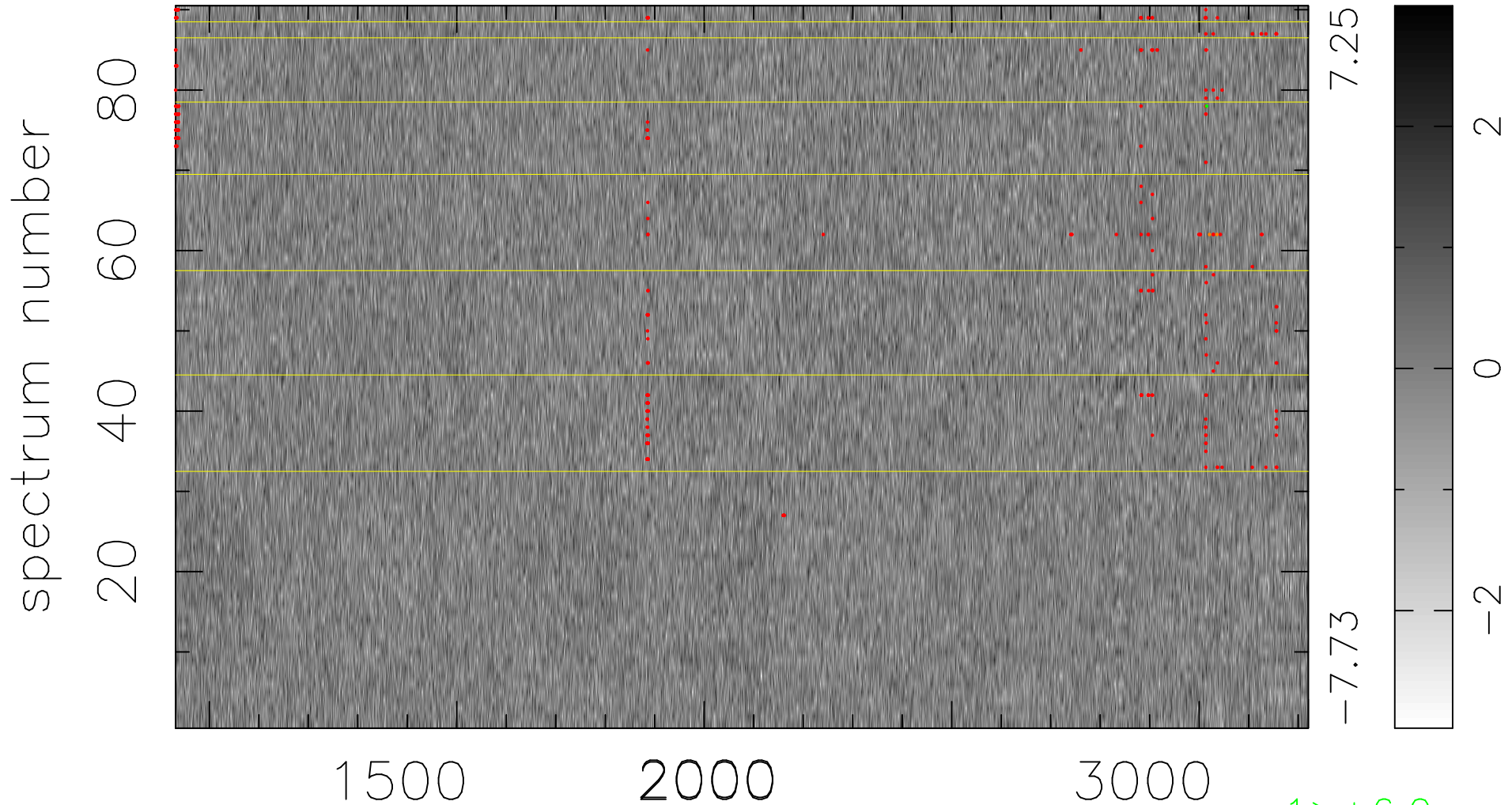


$$\chi(\lambda, t) = (\text{Data} - \text{Model } \text{AC}_5\text{B}_6\text{F}) / \sigma \chi$$

$$\chi^2 / (412020 - 5423) = 0.935 \Rightarrow 1.007$$

4578x90



bad:309=0.075% λ (Å) $z = 1.94659$

1 > +6.0 σ

2 < -6.0 σ