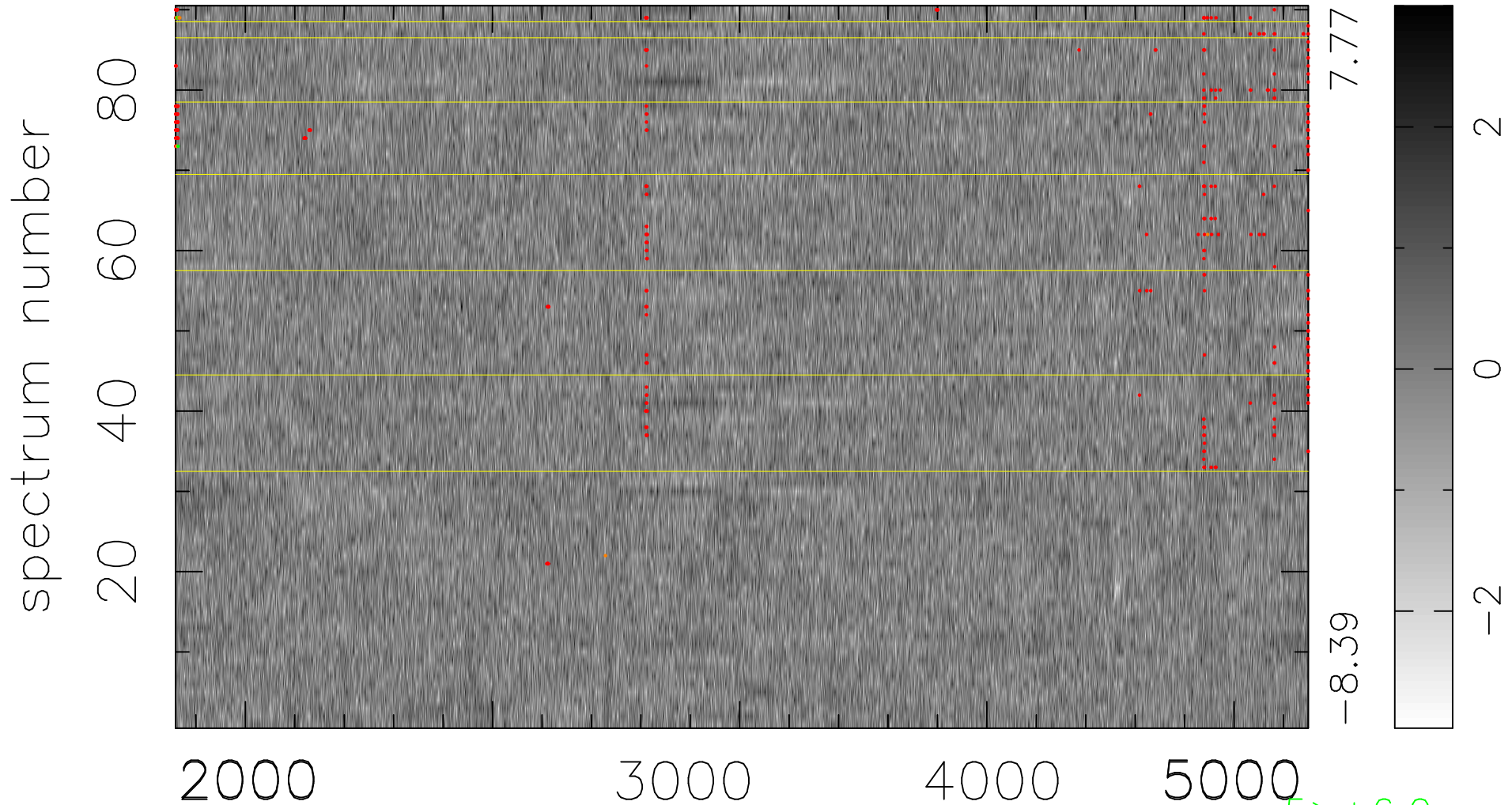


$$\chi(\lambda, t) = ( \text{Data} - \text{Model } \text{AC}_5\text{B}_4\text{F} ) / \sigma \chi$$

$$\chi^2 / (412470 - 5205) = 0.953 \Rightarrow 1.008$$

4583x90



bad:357=0.087%  $\lambda$  (Å)  $z = 0.92393$

5 > +6.0σ

8 < -6.0σ