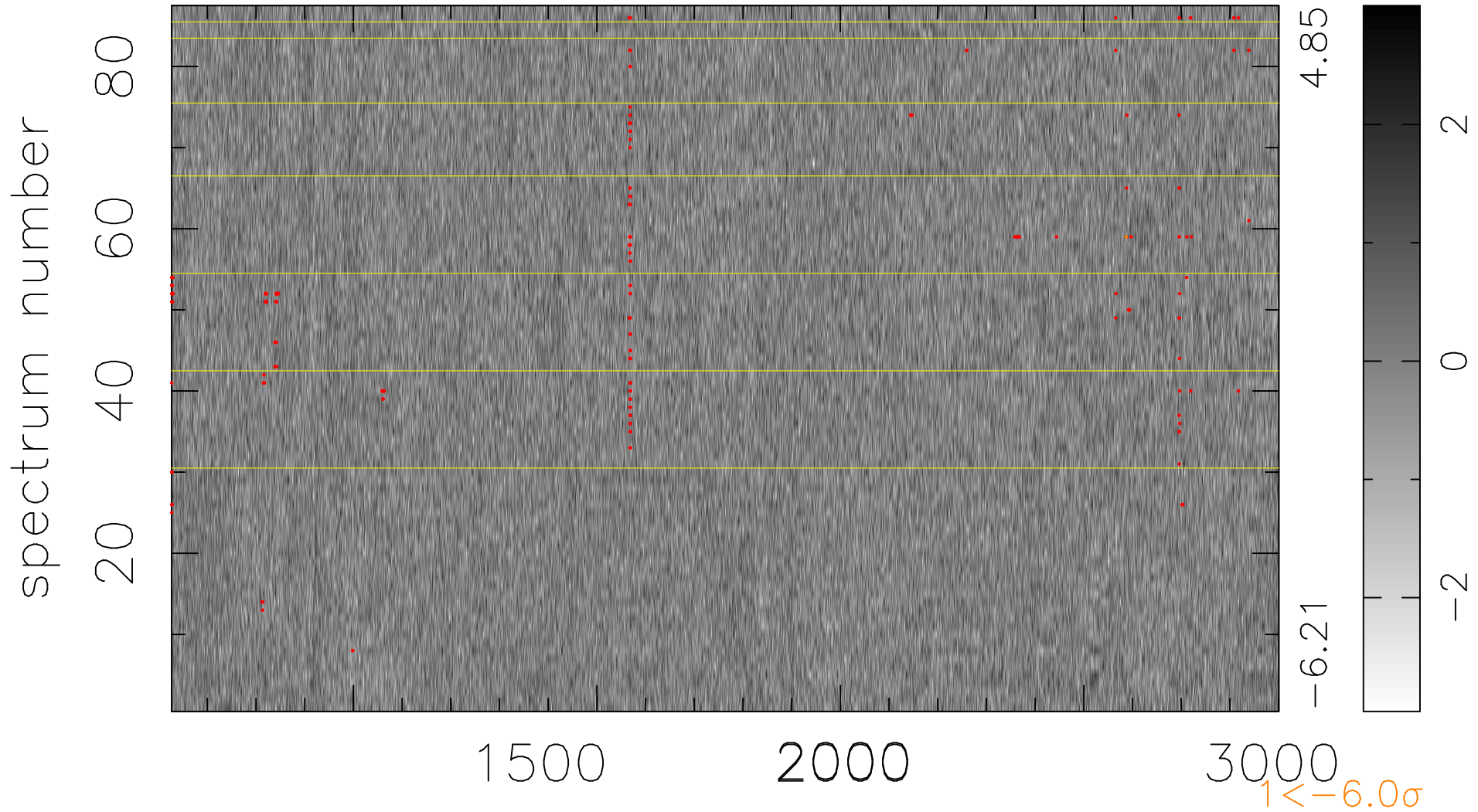


$$\chi(\lambda, t) = (\text{Data} - \text{Model } \text{AC}_5\text{B}_7\text{F}) / \sigma \chi$$

$$\chi^2 / (395676 - 5475) = 0.899 \Rightarrow 1.008$$

4548x87



bad:233=0.059% λ (Å) $z = 2.41072$