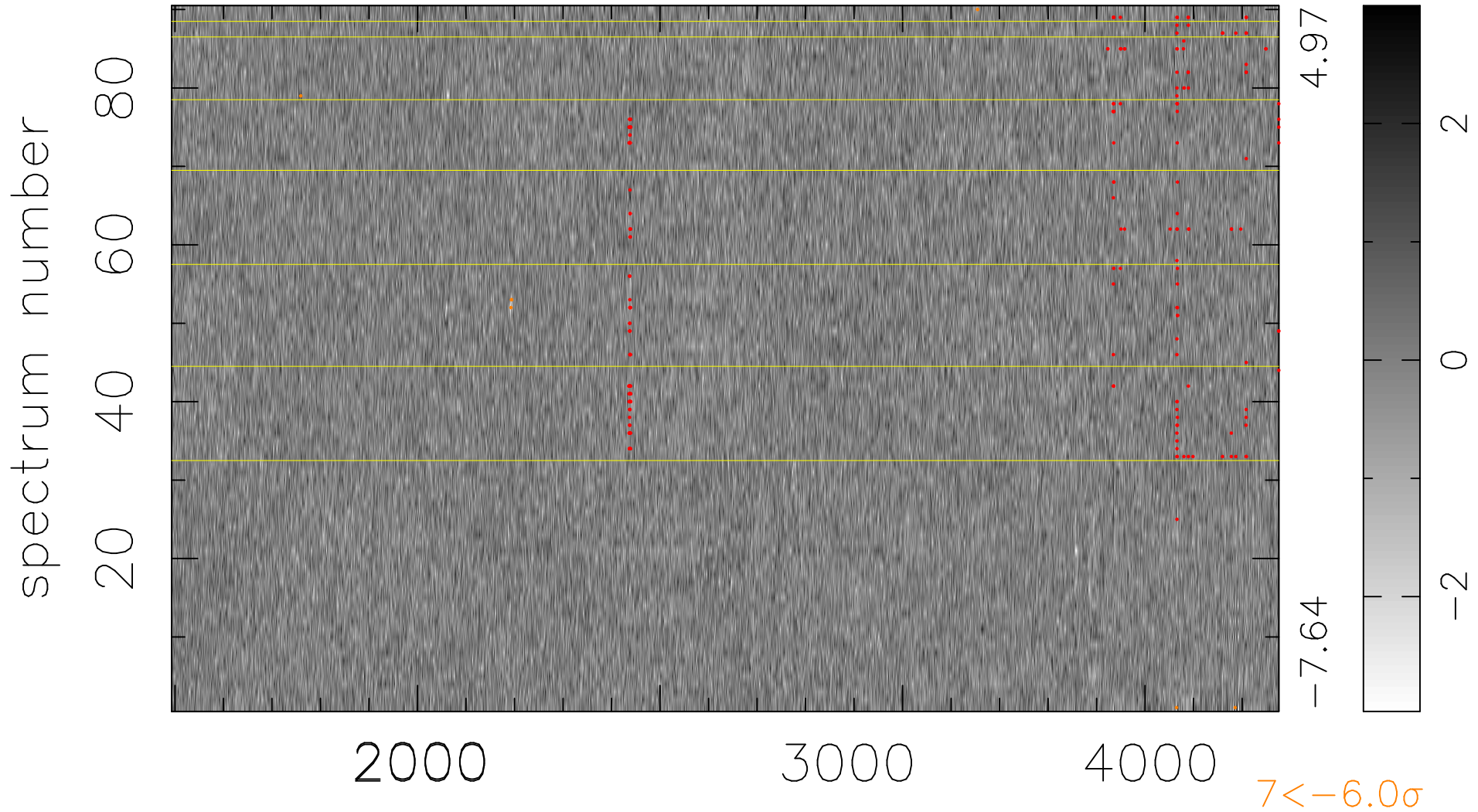


$$\chi(\lambda, t) = ( \text{Data} - \text{Model } \text{AC}_5\text{B}_3\text{F} ) / \sigma \chi$$

$$\chi^2 / (410940 - 5116) = 0.962 \Rightarrow 1.007$$

4566x90



bad:206=0.050%  $\lambda$  (Å)  $z = 1.28485$