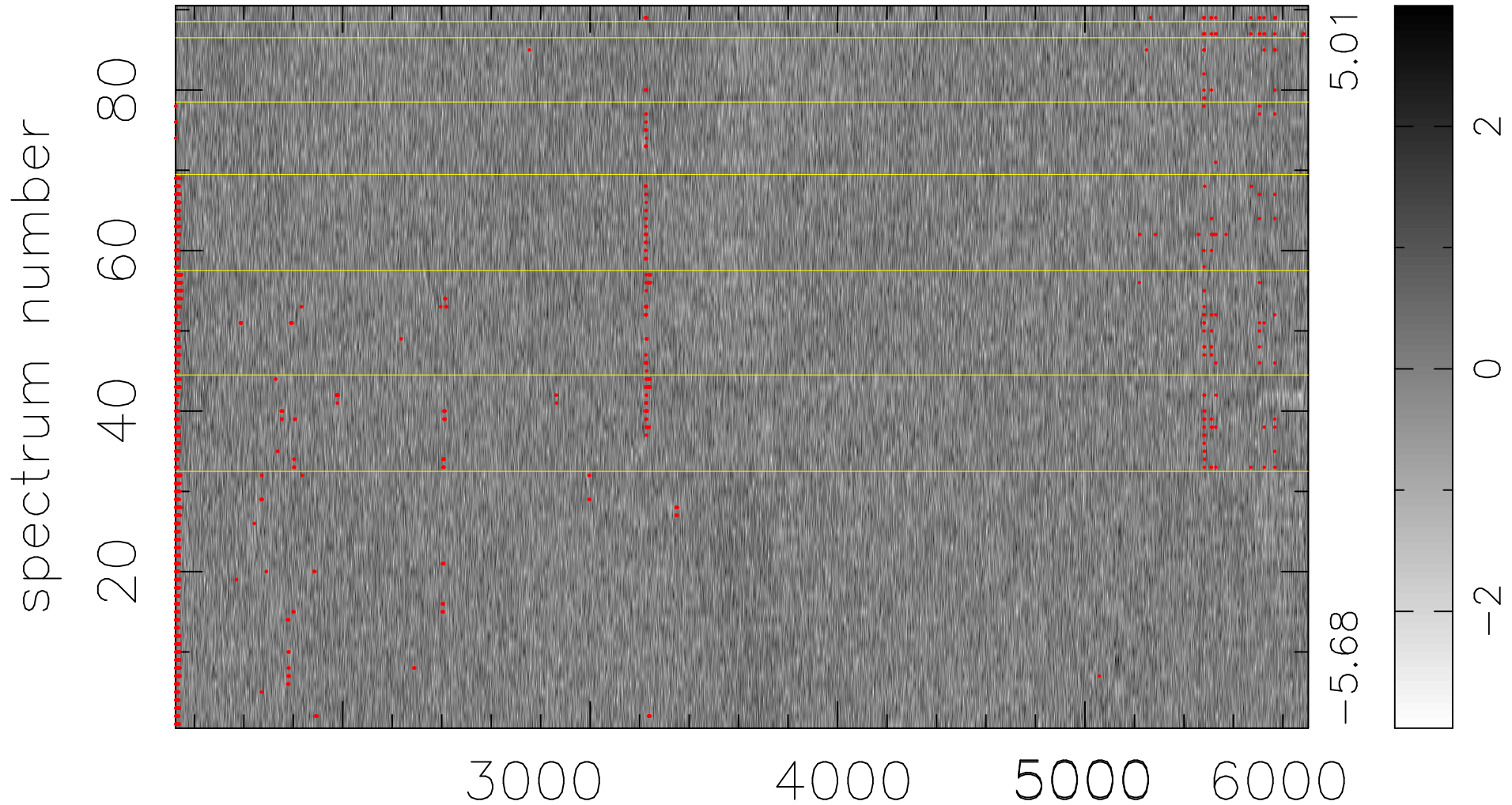


$$\chi(\lambda, t) = (\text{Data} - \text{Model } \text{AC}_5\text{B}_3\text{F}) / \sigma \chi$$

$$\chi^2 / (412110 - 5122) = 1.039 \Rightarrow 1.007$$

4579 × 90



bad:1558=0.38% λ (Å) $z = 0.67436$